



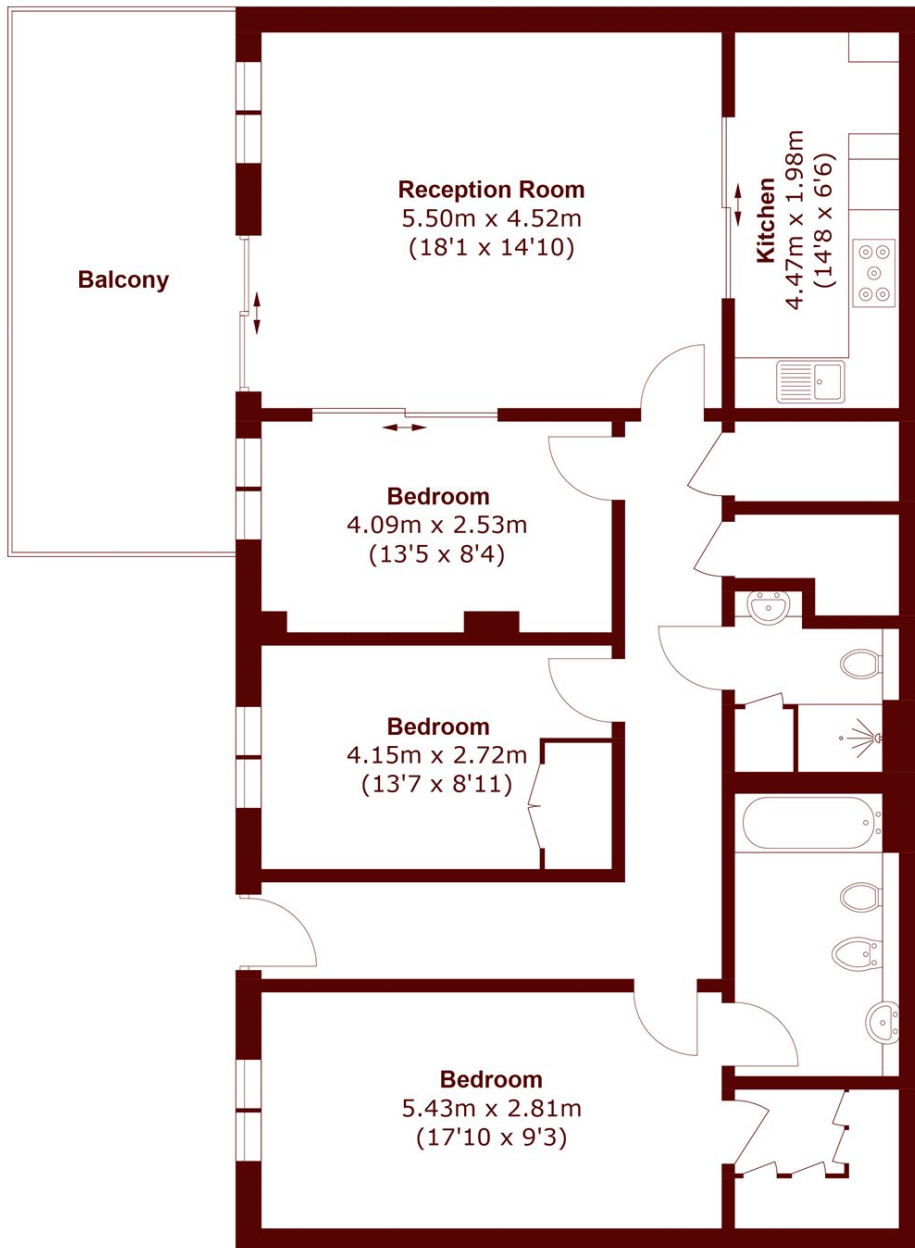
ASPECT COURT, SW6

£3,875 per week

A fantastic, modern three-bedroom apartment with private patio garden, located in the sought after riverside development of Imperial Wharf.

Three Large Double Bedrooms	Private Patio
Fantastic Living Space	24 Hour Concierge
Two Bathrooms	Residents Gym

STEP INSIDE ASPECT COURT



Total area (approx.): 107.2 sq. m (1,153.9 sq. ft)
Balcony area (approx.): 17.0 sq. m (183.0 sq. ft)

Fulham
020 7471 4520

Energy Rating: We aim to make our particulars both accurate and reliable. However, they are not guaranteed; nor do they form part of an offer or contract. If you require clarification on any points then please contact us, especially if you're traveling some distance to view. Please note that appliances and heating systems have not been tested and therefore no warranties can be given as to their good working order

**MARSH &
PARSONS**