



## RIDGWAY PLACE, SW19

£5,995 per month

Four bedrooms  
Four bathrooms  
South west facing garden  
Open plan kitchen  
New ground floor shower room  
Energy rating: d

@marshandparsons  
marshandparsons.co.uk

MARSH &  
PARSONS

# ABOUT THE PROPERTY

A spacious and modern four bedroom, four bathroom house available to let in Wimbledon.

The front door opens onto a very practical entrance space which then leads onto a more formal and generous hallway. From here you can access a front aspect living room with a bay window, a new downstairs shower room, and to the rear is a utility room and a high specification and modern kitchen/dining room. The kitchen with marble work surfaces and wood effect units has an island unit and a range of fitted appliances. Adjacent to the kitchen is a further spacious reception room with bi-folding doors to the garden.

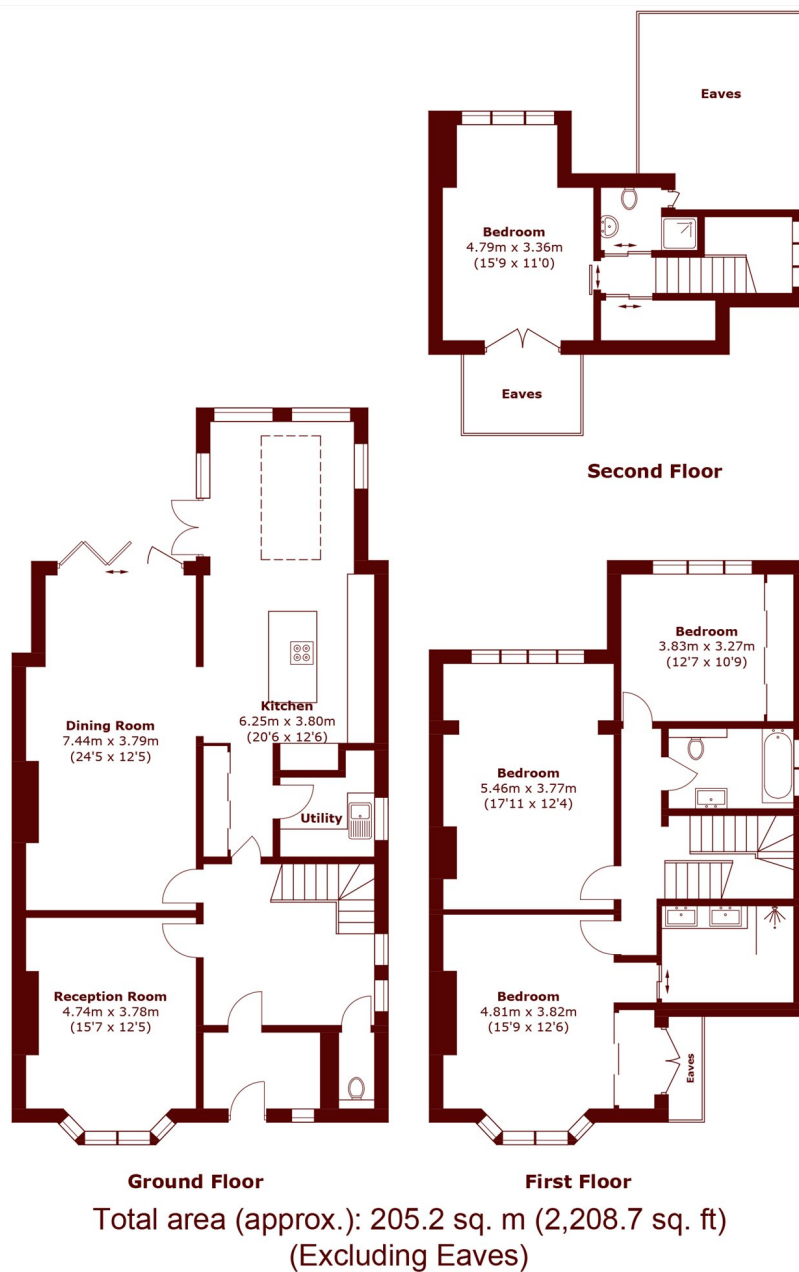








# STEP INSIDE RIDGWAY PLACE



Wimbledon  
020 8879 6661

Energy Rating: D We aim to make our particulars both accurate and reliable. However, they are not guaranteed; nor do they form part of an offer or contract. If you require clarification on any points then please contact us, especially if you're traveling some distance to view. Please note that appliances and heating systems have not been tested and therefore no warranties can be given as to their good working order

MARSH &  
PARSONS