

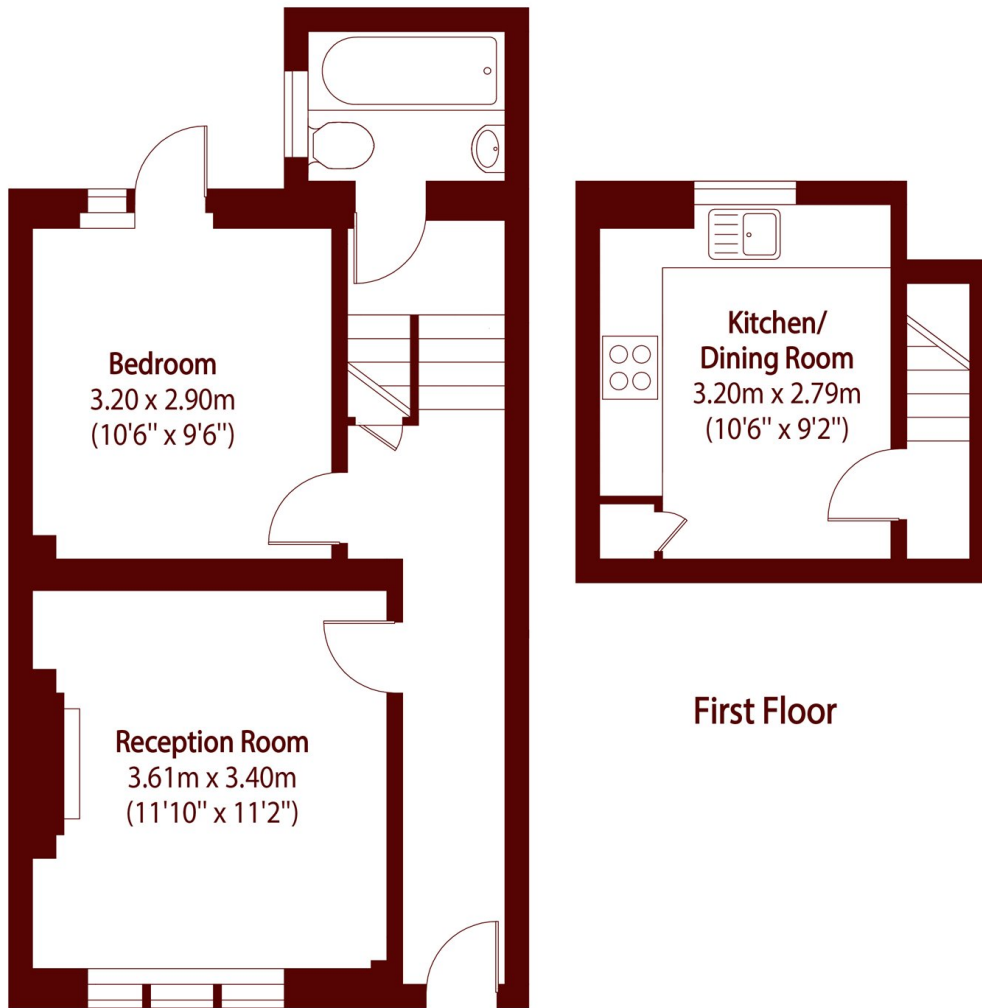


Star Street, W2

£599,995



- Moments Away From Hyde Park
- Good Storage Space
- Renovated Kitchen
- Great Transport Links
- Duplex Apartment
- Private Patio



Ground Floor

First Floor

Total area (approx): 47.85 sq m (515 sq. ft)

Marsh & Parsons Notting Hill

2-6 Kensington Park Road,
London, W11 3BU
020 7313 2890