



CONCORD COURT, W4

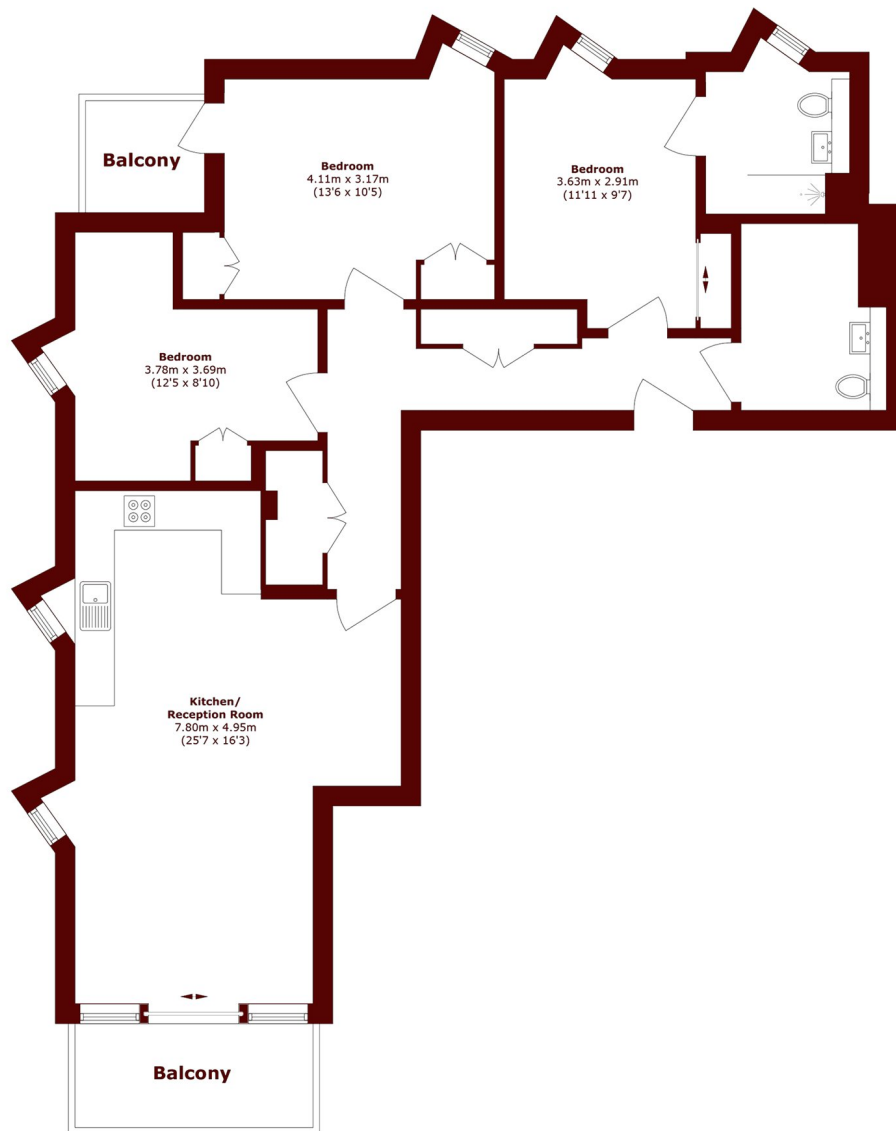
£3,500 per month

This beautifully presented three-bedroom apartment is set within the prestigious and secure gated development of Palladian Gardens, offering an exceptional London rental opportunity.

Three bedrooms
Underground parking
Communal gardens

Concierge service
Gated development
Energy rating: b

STEP INSIDE CONCORD COURT



Total area (approx.): 97.8 sq. m (1052.7 sq. ft)

Balcony area (approx.): 8.7 sq. m (93.6 sq. ft)

Chiswick
020 8629 0900

Energy Rating: B We aim to make our particulars both accurate and reliable. However, they are not guaranteed; nor do they form part of an offer or contract. If you require clarification on any points then please contact us, especially if you're traveling some distance to view. Please note that appliances and heating systems have not been tested and therefore no warranties can be given as to their good working order

MARSH &
PARSONS