



HOLLAND PARK AVENUE, W11

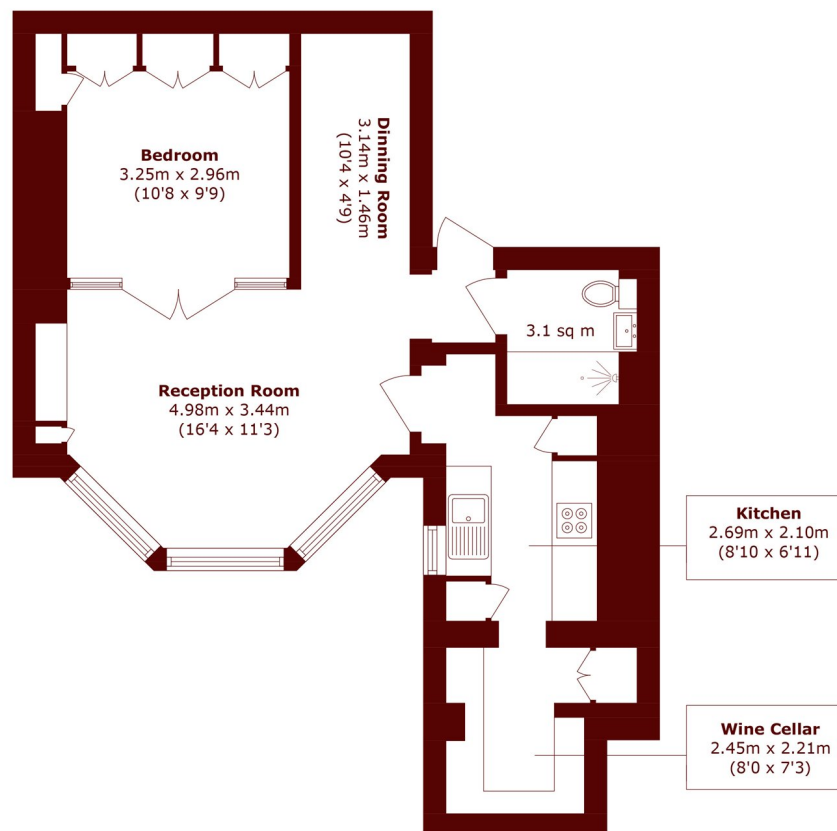
£625,000

This modern apartment is situated within a fine period building in this wonderful Holland Park location. The property offers a good-sized reception room with dining area and lounge space.

One bedroom
Beautifully presented
Wooden flooring

Excellent location
Period Building
Modern Kitchen

STEP INSIDE HOLLAND PARK AVENUE



Lower Ground Floor

Total area (approx.): 48.3 sq. m (519.9 sq. ft)

Holland Park
020 7605 6890

Energy Rating: D We aim to make our particulars both accurate and reliable. However, they are not guaranteed; nor do they form part of an offer or contract. If you require clarification on any points then please contact us, especially if you're traveling some distance to view. Please note that appliances and heating systems have not been tested and therefore no warranties can be given as to their good working order

**MARSH &
PARSONS**