

Rathbone Place, W1T

£2,500 per week

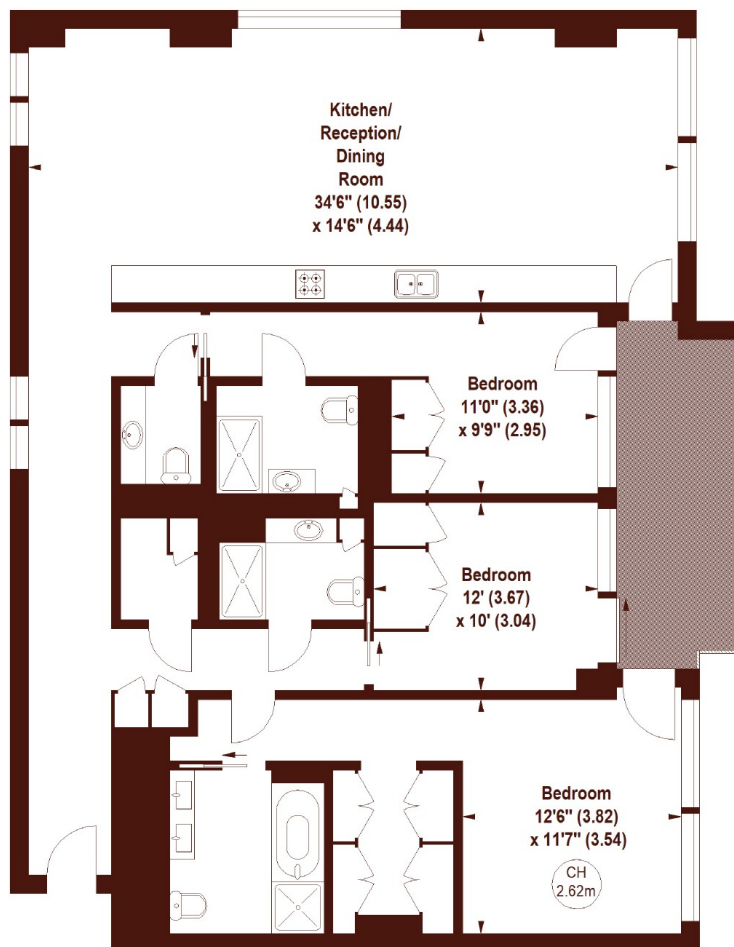


- Three double bedrooms
- Immaculate finish throughout
- Access to Gym, Pool, Wine tasting room & Cinema

Rathbone Place, W1T

APPROX. GROSS INTERNAL FLOOR AREA 1556 SQFT / 144.74 SQM

Key :
CH - Ceiling Height



SECOND FLOOR

Not to scale, for guidance only and must not be relied upon as a statement of fact.
All measurements and areas are approximate only

Marsh & Parsons Marylebone & Mayfair

94 Baker Street, London,
W1U 6FZ
020 7935 1775