



LINEN HOUSE, W4

£525,000

One bedroom
Gated parking
Long lease
Close to transport
Life access
Energy rating: b

@marshandparsons
marshandparsons.co.uk

MARSH &
PARSONS



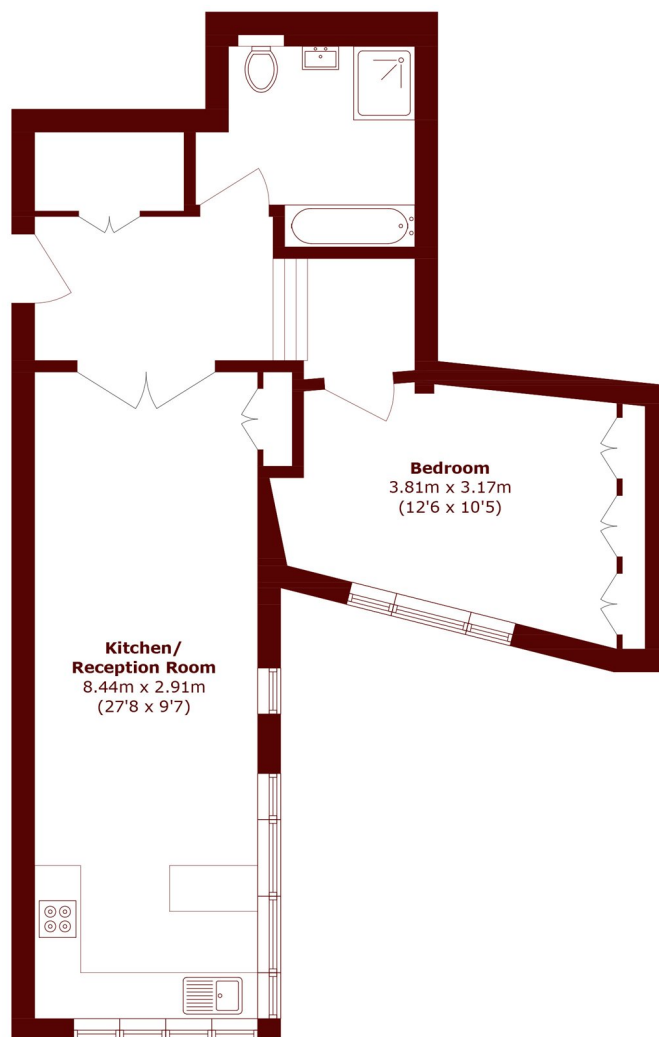
ABOUT THE PROPERTY

This immaculately presented one- bedroom apartment offers over 620sqft of living space and includes built in storage, a shower and a bath, a long lease, gated parking, lift access and an EPC rating of b.

Linen House is located moments from Chiswick House and Gardens and only a few hundred meters from the River Thames. Other leisure facilities close by include Dukes Meadows (Golf Tennis & Ski). Linen House has easy access to the A4/M4 in and out of London.



STEP INSIDE LINEN HOUSE



Total area (approx.): 57.8 sq. m (622.2 sq. ft)

Chiswick
020 8994 2556

Energy Rating: B We aim to make our particulars both accurate and reliable. However, they are not guaranteed; nor do they form part of an offer or contract. If you require clarification on any points then please contact us, especially if you're traveling some distance to view. Please note that appliances and heating systems have not been tested and therefore no warranties can be given as to their good working order

MARSH &
PARSONS