



LUSHINGTON ROAD, NW10

£8,000 per month

Four bedrooms
Two reception
Utility room
Newly refurbished
Three bathrooms
Great location

@marshandparsons
marshandparsons.co.uk

MARSH &
PARSONS

ABOUT THE PROPERTY

A modern, fully refurbished five bedroom home, designed for comfortable family living. The property has five good sized bedrooms, a spacious garden and in an area ideal for relaxing and commute.

Located in prime Kensal Rise with great access to Kensal Green station (Bakerloo and Overground) and Kensal Rise (Overground) and several bus routes. The open green spaces of Queens Park are a short distance away,

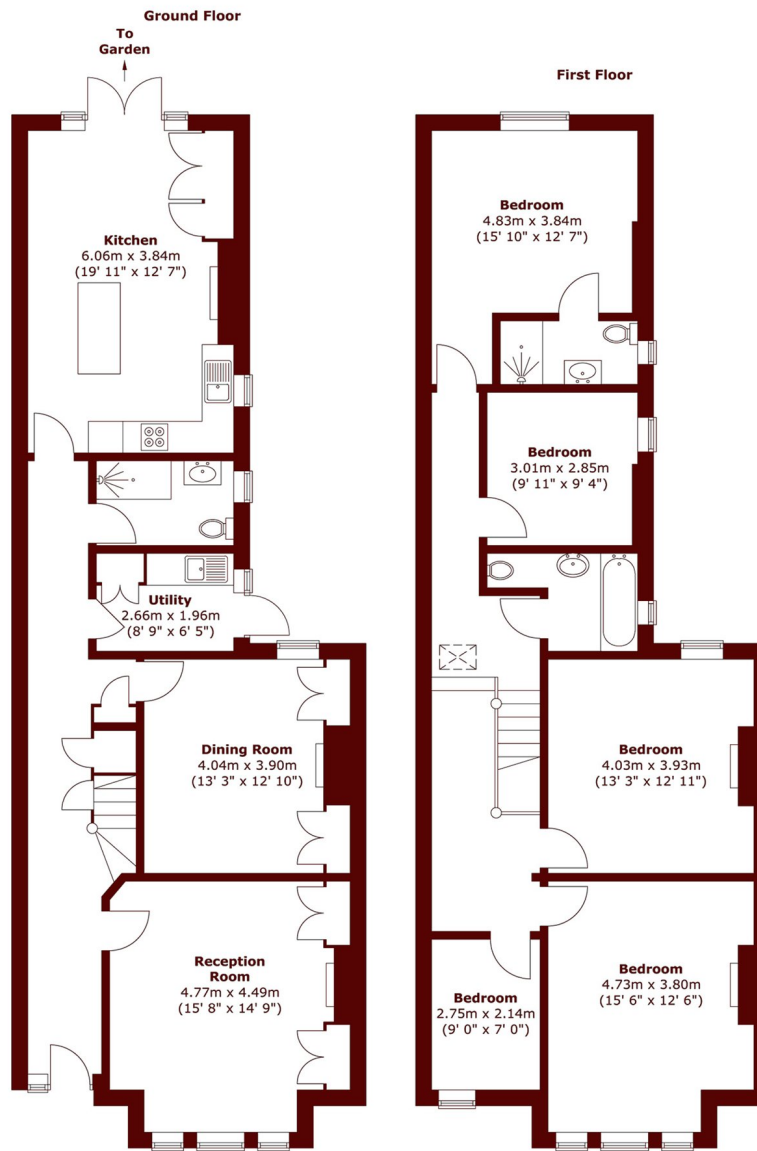








STEP INSIDE LUSHINGTON ROAD



Total area (approx.) : 182.2 sq. m (1961 sq. ft)

Queen's Park
020 7871 5050

Energy Rating: We aim to make our particulars both accurate and reliable. However, they are not guaranteed; nor do they form part of an offer or contract. If you require clarification on any points then please contact us, especially if you're traveling some distance to view. Please note that appliances and heating systems have not been tested and therefore no warranties can be given as to their good working order

MARSH &
PARSONS