



ADELAIDE ROAD, NW3

£450,000

Two Double Bedrooms
Open-Plan Living Space
Large Family Bathroom
South Facing Balcony
Close to Primrose Hill
No Onward Chain

@marshandparsons
marshandparsons.co.uk

MARSH &
PARSONS



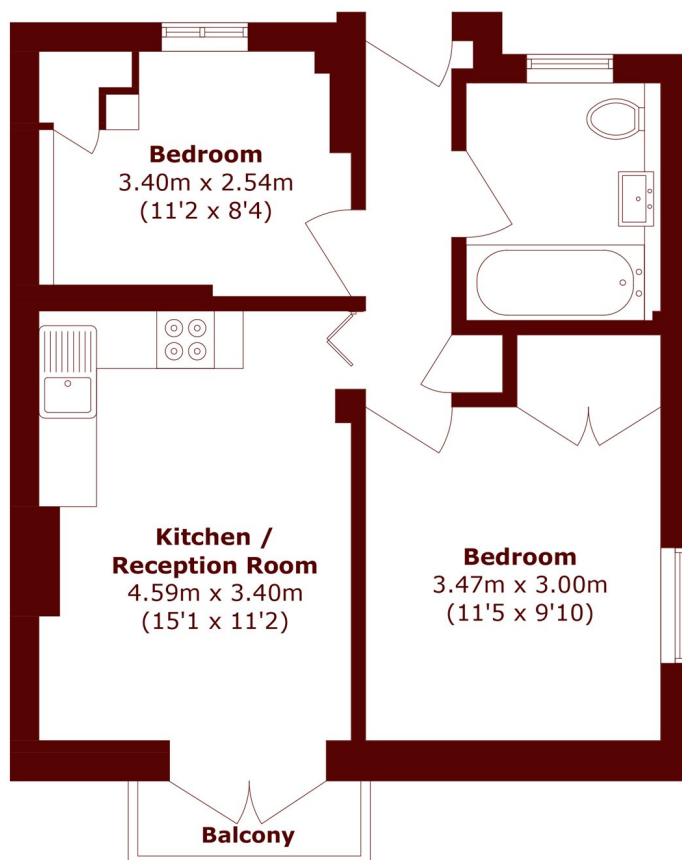
ABOUT THE PROPERTY

A well-presented two-bedroom flat featuring an open-plan kitchen and living area. The property also benefits from a lovely balcony, accessed directly from the living space, allowing plenty of natural light to fill the flat. Offered to the market with no onward chain.

Constable House, situated in Chalk Farm, benefits from excellent access to local transport links, popular green spaces including Hampstead Heath and Primrose Hill, and a wide range of amenities such as convenience shops and Camden Stables Market.



STEP INSIDE ADELAIDE ROAD



Total area (approx.): 46.6 sq. m (501.6 sq. ft)

Balcony area (approx.): 1.8 sq. m (19.3 sq. ft)

Camden
020 7244 2200

Energy Rating: C We aim to make our particulars both accurate and reliable. However, they are not guaranteed; nor do they form part of an offer or contract. If you require clarification on any points then please contact us, especially if you're traveling some distance to view. Please note that appliances and heating systems have not been tested and therefore no warranties can be given as to their good working order

MARSH &
PARSONS