



WIMBLEDON PARK ROAD, SW19

£2,500 per month

Two bedrooms
Furnished
Balcony
Overlooking Wimbledon Park
Garage
Energy rating: d

@marshandparsons
marshandparsons.co.uk

MARSH &
PARSONS



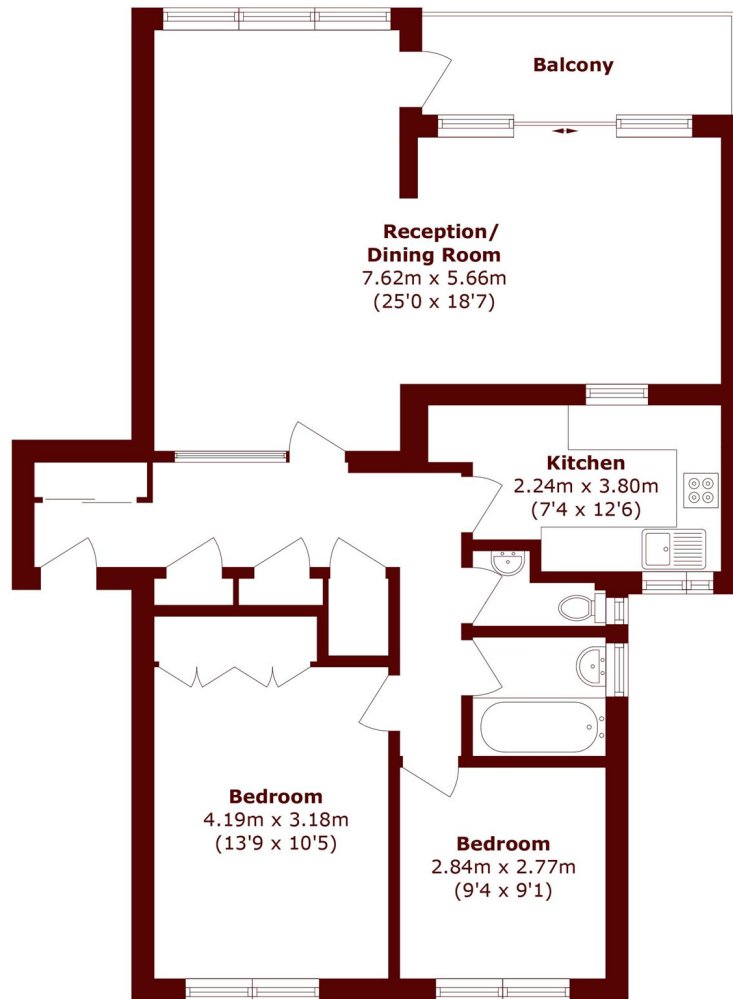
ABOUT THE PROPERTY

A second floor apartment offering a spacious living/ dining room with door to a private balcony with far reaching views over Wimbledon Park, a fitted kitchen, two double bedrooms, a bathroom, separate toilet, off street parking space and a garage.

The property is located within walking distance of Southfields Tube Station.



STEP INSIDE WIMBLEDON PARK ROAD



Total area (approx): 84.7 sq. m (911.7 sq. ft)
Balcony area (approx): 5.5 sq. m (59.2 sq. ft)

Wimbledon
020 8879 6661

Energy Rating: D We aim to make our particulars both accurate and reliable. However, they are not guaranteed; nor do they form part of an offer or contract. If you require clarification on any points then please contact us, especially if you're traveling some distance to view. Please note that appliances and heating systems have not been tested and therefore no warranties can be given as to their good working order

MARSH &
PARSONS