



BALLARD CLOSE, KT2

£6,500 per month

Gated house
Detached
Five bedrooms
Three bathrooms
Off-street parking
Energy rating: d

@marshandparsons
marshandparsons.co.uk

MARSH &
PARSONS

ABOUT THE PROPERTY

A five bedroom gated detached house in Coombe. With two reception rooms, kitchen/breakfast room, master bedroom with en suite bathroom, three double bedrooms, family bathroom with sauna, ground floor bedroom with en suite shower. Games room with billiard table, utility room, large wrap around garden, garage and off street parking.

Located on a quiet, secluded private road in the desirable Coombe area.

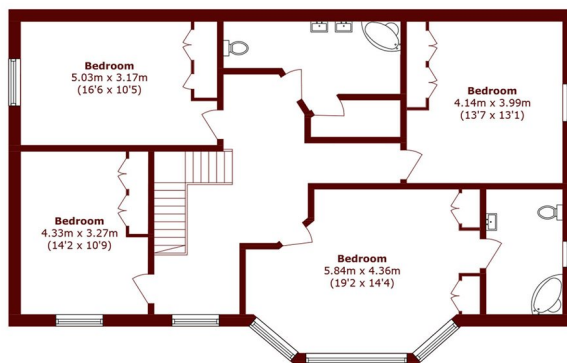




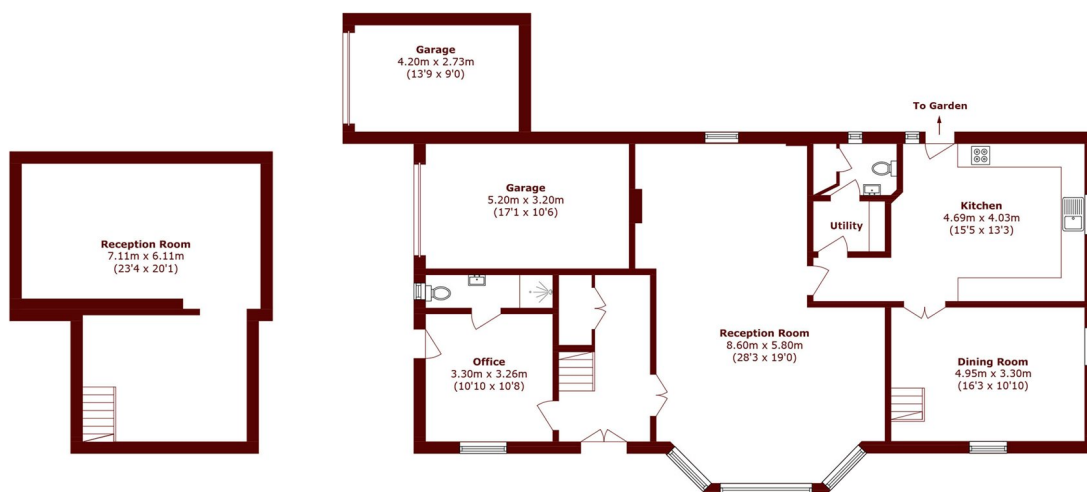




STEP INSIDE BALLARD CLOSE



First Floor



Lower Ground Floor

Ground Floor

Total area (approx.): 261.4 sq. m (2813.7 sq. ft)

Garage areas (approx.): 28.1 sq. m (302.4 sq. ft)

Wimbledon
020 8879 6661

Energy Rating: D We aim to make our particulars both accurate and reliable. However, they are not guaranteed; nor do they form part of an offer or contract. If you require clarification on any points then please contact us, especially if you're traveling some distance to view. Please note that appliances and heating systems have not been tested and therefore no warranties can be given as to their good working order

MARSH &
PARSONS