



DEAN STREET, W1D

£900,000

Situated in the heart of thriving Soho, this large loft-style one-bedroom apartment benefits from an abundance of space and bright interiors. Located on the first floor, with lift access, the stunning apartment

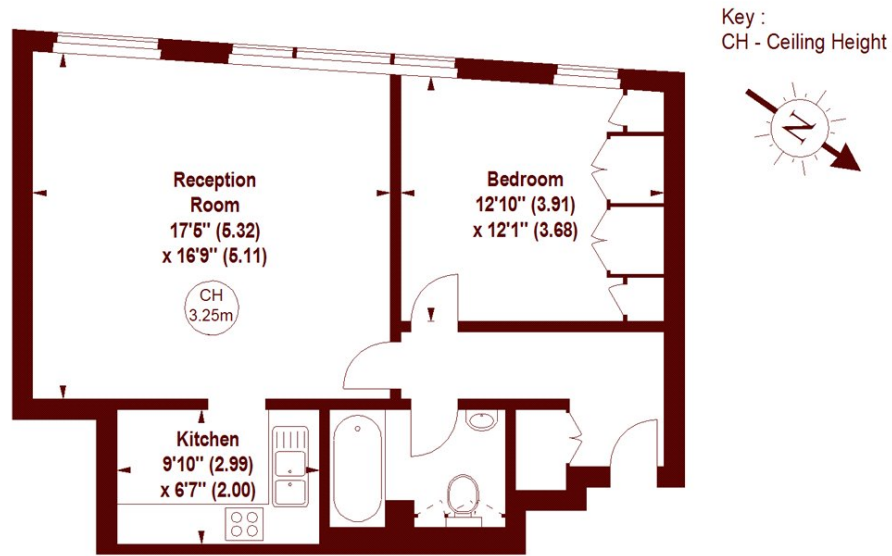
One bedroom
Loft style

Large proportions
Communal roof terrace

STEP INSIDE DEAN STREET

Dean Street, W1

APPROX. GROSS INTERNAL FLOOR AREA 643 SQFT / 59.73 SQM



FIRST FLOOR

The floor plan is not to scale and measurements and areas shown are approximate and therefore should be used for illustrative purposes only. The plan has been prepared in accordance with the RICS code of Measuring Practice and whilst we have confidence in the information produced, it must not be relied on.

If there is any aspect of particular importance, you should carry out or commission your own inspection of the property.

Copyright of FeaturePRO.

Marylebone & Mayfair
020 7935 1775

Energy Rating: E We aim to make our particulars both accurate and reliable. However, they are not guaranteed; nor do they form part of an offer or contract. If you require clarification on any points then please contact us, especially if you're traveling some distance to view. Please note that appliances and heating systems have not been tested and therefore no warranties can be given as to their good working order

MARSH &
PARSONS