



THORNEY HEDGE ROAD, W4

£1,900 per month

One double bedroom
Separate study room
Split level property
Modern interior
Open plan living
Energy rating: c

@marshandparsons
marshandparsons.co.uk

MARSH &
PARSONS



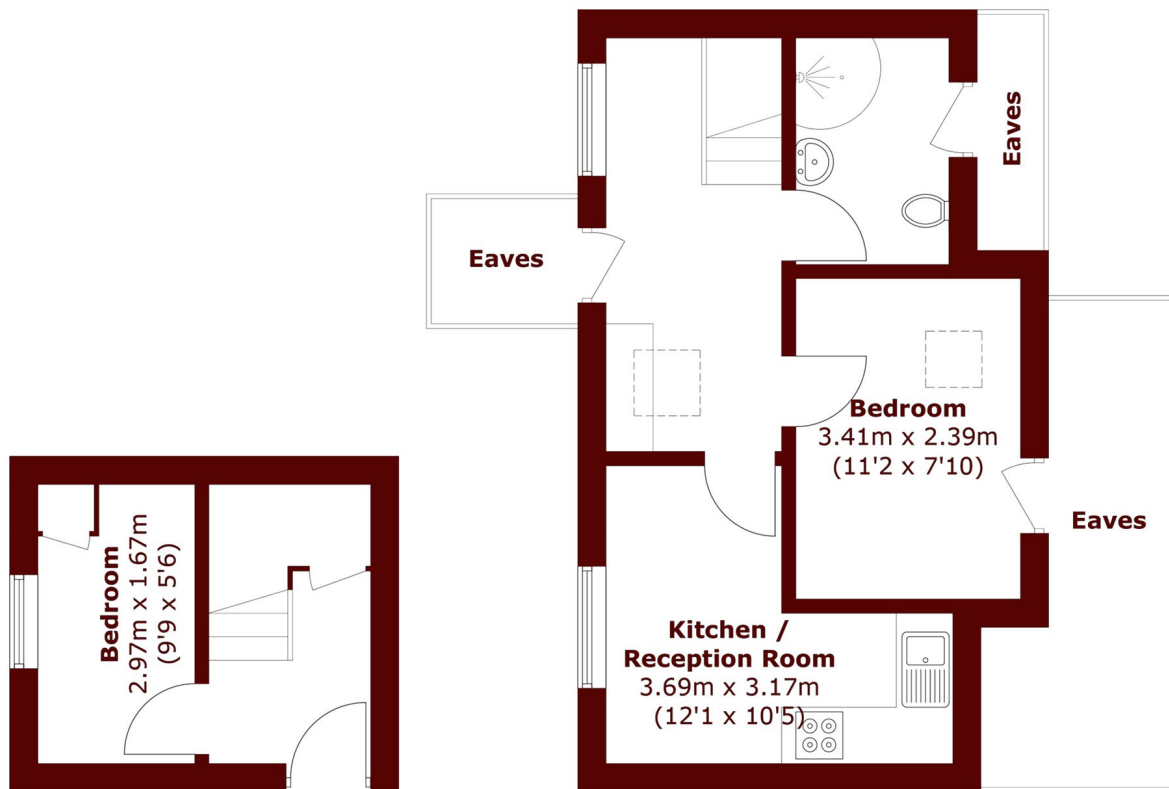
ABOUT THE PROPERTY

Finished to an exceptionally high standard, this stylish apartment offers a contemporary open-plan living space, sleek modern kitchen, luxury bathroom and a well-designed split-level layout with a double bedroom and further study room.

Ideally located moments from Chiswick High Road, with its fantastic selection of cafés, restaurants and shops, and within easy reach of excellent transport links including Gunnersbury Station.



STEP INSIDE THORNEY HEDGE ROAD



First Floor

Second Floor

Total area (approx.): 41.8 sq. m (449.9 sq. ft)
(Excluding Eaves)

Chiswick
020 8629 0900

Energy Rating: C We aim to make our particulars both accurate and reliable. However, they are not guaranteed; nor do they form part of an offer or contract. If you require clarification on any points then please contact us, especially if you're traveling some distance to view. Please note that appliances and heating systems have not been tested and therefore no warranties can be given as to their good working order

**MARSH &
PARSONS**