



## COLLEGE PLACE, NW1

£500,000

Period Conversion  
Long Lease  
Quiet Street  
Close To Amenities  
High Ceilings  
Well Lit Throughout

@marshandparsons  
marshandparsons.co.uk

MARSH &  
PARSONS



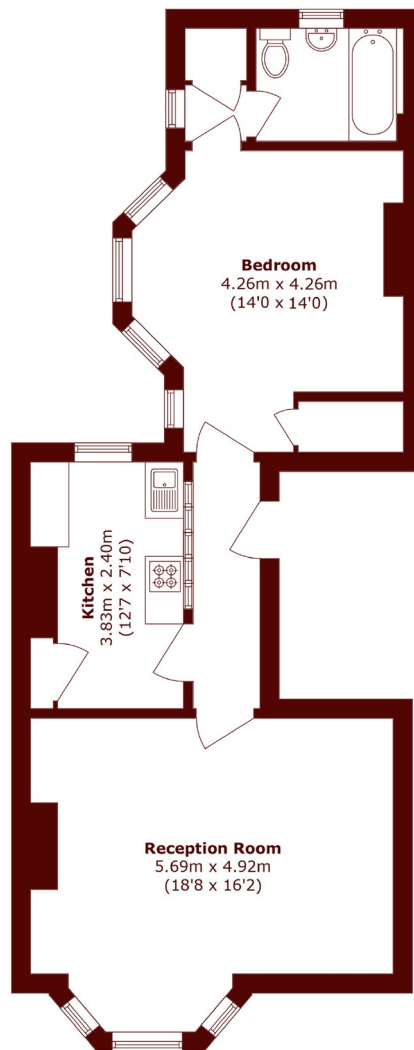
# ABOUT THE PROPERTY

On one of the most sought after tree-lined roads in Camden is this first floor one double bedroom apartment. With approximately 690 sq.ft, the period property has high ceilings, large sash windows that let in an abundance of natural light, with a separate kitchen and a possible option to convert into a two bedroom home.

This property is fantastically located close to Camden Town's multiple shops, transport and entertainment facilities. It is moments away from King's Cross and St Pancras mainline station, Camden Town Tube Station and also Mornington Crescent.



# STEP INSIDE COLLEGE PLACE



Total area (approx.): 64.0 sq. m (688.9 sq. ft)

**Camden**  
020 7244 2200

Energy Rating: D We aim to make our particulars both accurate and reliable. However, they are not guaranteed; nor do they form part of an offer or contract. If you require clarification on any points then please contact us, especially if you're traveling some distance to view. Please note that appliances and heating systems have not been tested and therefore no warranties can be given as to their good working order

**MARSH &  
PARSONS**