



## LOWER SLOANE STREET, SW1W

£1,600 per week

- Brand newly refurbished
- Wooden floors
- High ceilings
- Envious location
- Top floor
- Flooded with natural light



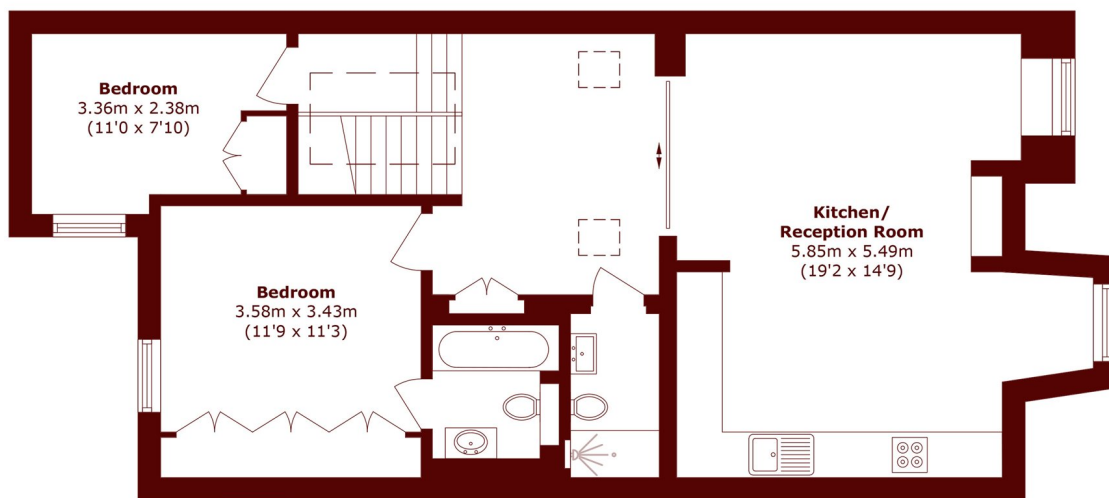
# ABOUT THE PROPERTY

A beautifully presented and well-proportioned top floor flat in this handsome period red brick building. It has been completely renovated to exacting standards and features wooden floors, Siemens appliances, high ceilings, large windows, and an abundance of natural light throughout. The property offers two bedrooms, along with an additional smaller bedroom which can be used as a home office or accommodates a single bed.

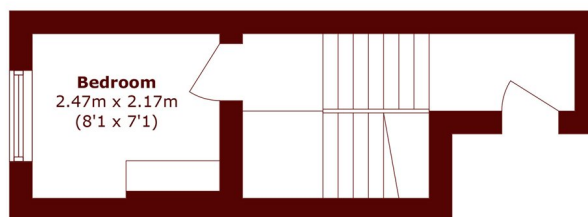
Sloane Gardens is a peaceful and residential area with an array of luxurious properties and close proximity to the amenities of the King's Road. The neighbourhood is home to some of the most prestigious schools in London, making it a



# STEP INSIDE LOWER SLOANE STREET



**Third Floor**



**Second Floor**

Total area (approx.): 84.9 sq. m (913.8 sq. ft)

Chelsea  
020 7591 5570

Energy Rating: We aim to make our particulars both accurate and reliable. However, they are not guaranteed; nor do they form part of an offer or contract. If you require clarification on any points then please contact us, especially if you're traveling some distance to view. Please note that appliances and heating systems have not been tested and therefore no warranties can be given as to their good working order

MARSH &  
PARSONS