



KILMINGTON ROAD, SW13

£975,000

Terraced house
Three / Four bedrooms
Well presented
Impressive open plan kitchen and living
room
West facing private garden

@marshandparsons
marshandparsons.co.uk

MARSH &
PARSONS

ABOUT THE PROPERTY

Marsh & Parsons are delighted to bring to the market this four bedroom terraced home on this quiet residential road in North Barnes. The property offers impressive accommodation arranged over three floors with the ground floor comprising extended versatile living that provides an exceptional open-plan kitchen/dining/living area, with attractive wooden floors, fabulous vaulted ceiling, and bi-folding doors opening out to the rear garden. There is a separate reception at the front of the property, that could be used as another bedroom. On the first floor you will find two spacious bedrooms, both of which have use of a stylish family bathroom. There is a further double bedroom on the second floor that has a rear-facing Juliet balcony and a stylish en-suite with

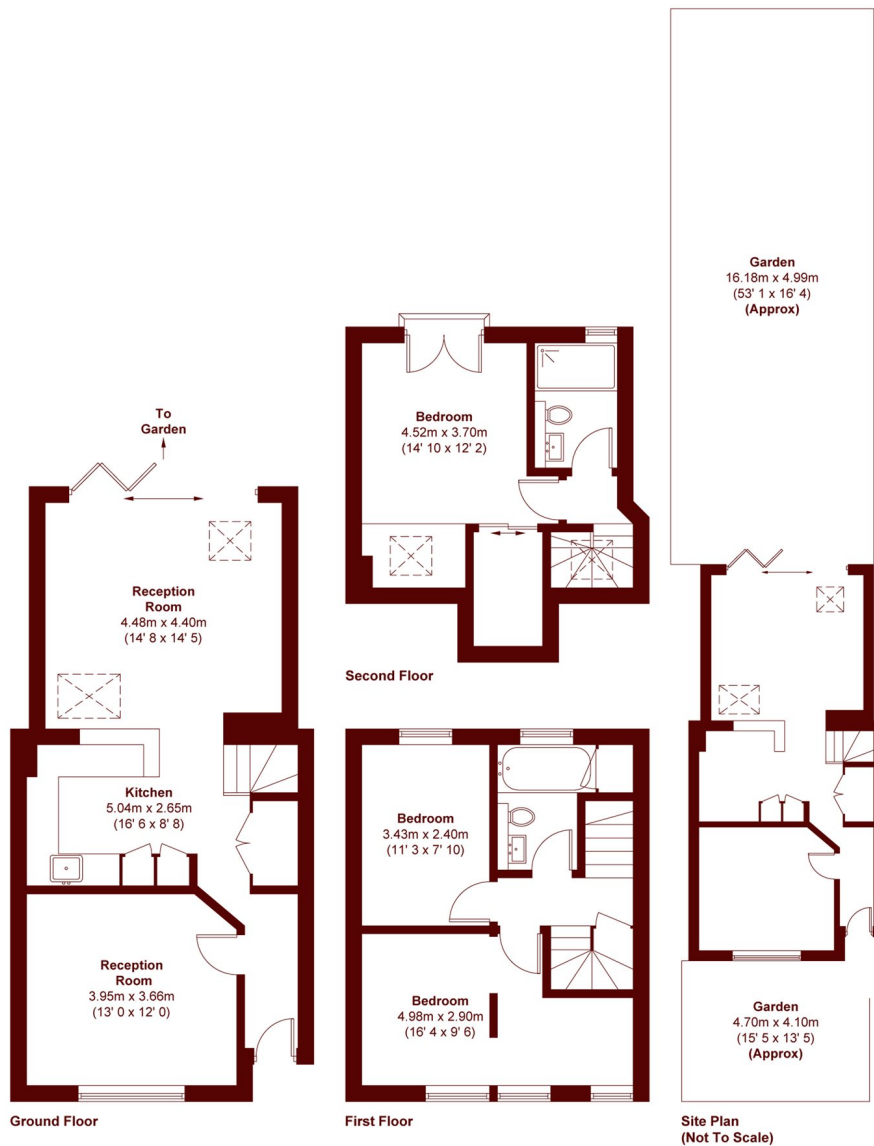








STEP INSIDE KILMINGTON ROAD



APPROX. GROSS INTERNAL FLOOR AREA = 1179 SQFT / 109.5 SQM
 APPROX. GROSS EXTERNAL BALCONY AREA = 2 SQFT / 0.2 SQM

Barnes & East Sheen
 020 8102 0123

Energy Rating: C We aim to make our particulars both accurate and reliable. However, they are not guaranteed; nor do they form part of an offer or contract. If you require clarification on any points then please contact us, especially if you're traveling some distance to view. Please note that appliances and heating systems have not been tested and therefore no warranties can be given as to their good working order

**MARSH &
 PARSONS**