



AYLESFORD STREET, SW1V

£519 per week

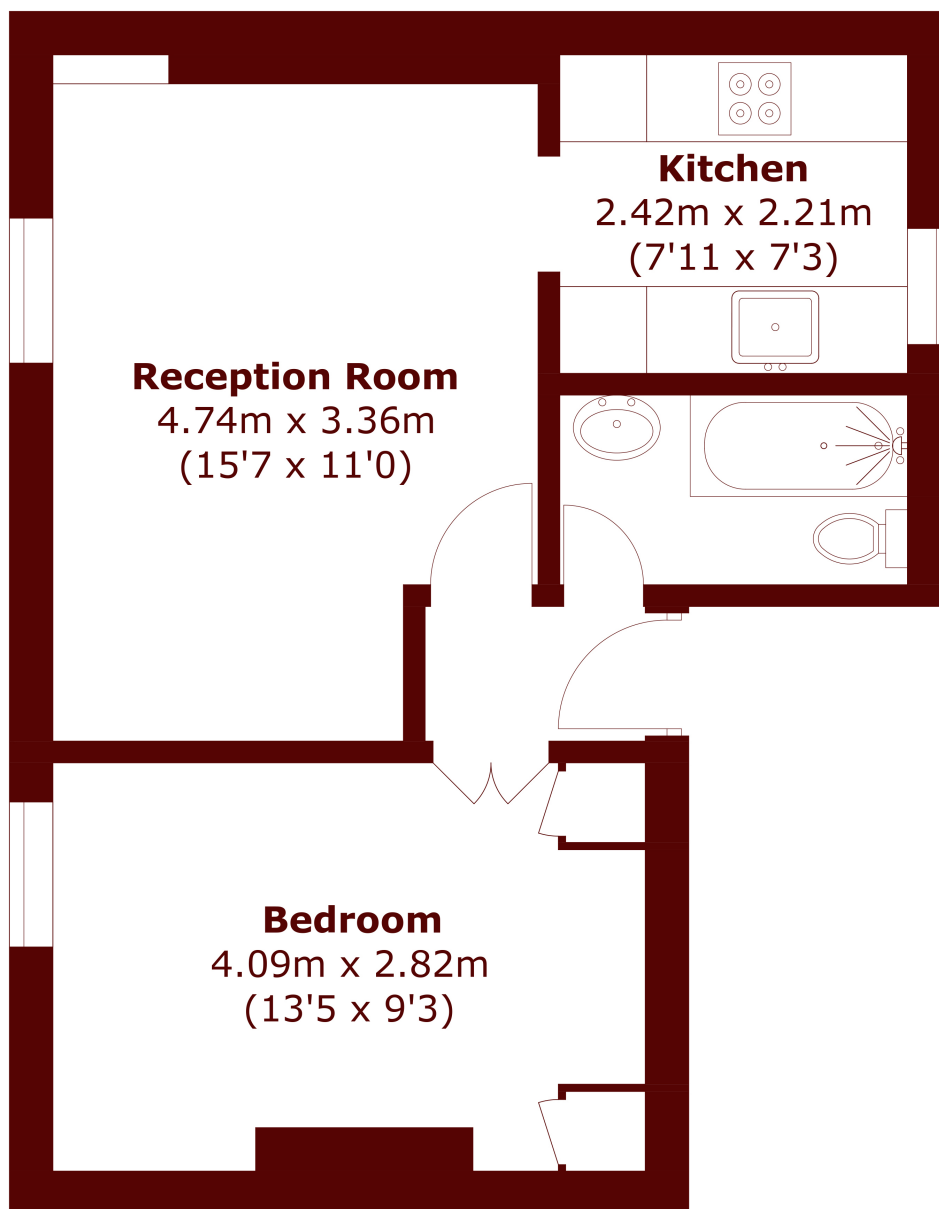
A fantastic one bedroom apartment which benefits from an abundance of natural light, and comprises a spacious reception room, leading to an open-plan well equipped kitchen with integrated appliances.

One double bedroom
Separate kitchen
Built-in storage

Shower over bath
Pimlico grid
Energy rating: d

STEP INSIDE

AYLESFORD STREET



Total area (approx.): 38.3 sq. m (412.3 sq. ft)

Pimlico & Westminster
020 7828 8100

Energy Rating: We aim to make our particulars both accurate and reliable. However, they are not guaranteed; nor do they form part of an offer or contract. If you require clarification on any points then please contact us, especially if you're traveling some distance to view. Please note that appliances and heating systems have not been tested and therefore no warranties can be given as to their good working order

MARSH &
PARSONS