

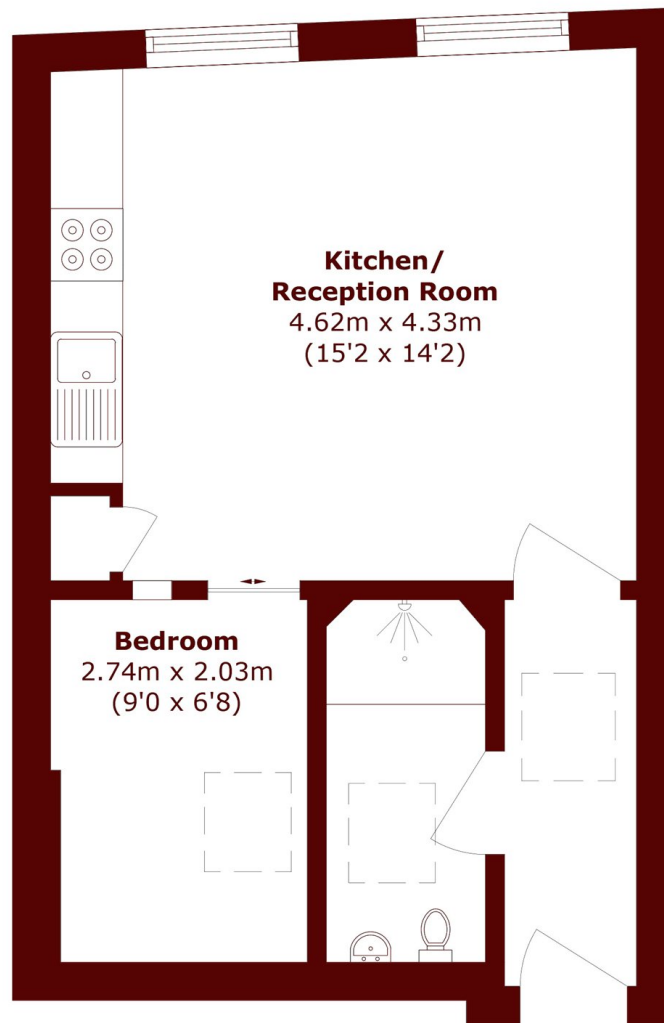


Westbourne Grove Terrace, W2

£475 per week (£2,058 pcm)

 1  1  1  EXE

- Modern Apartment
- Plenty of Natural Light
- White Wooden Floors
- Period Conversion
- Open Plan Kitchen
- Superb location



Total area (approx.): 32.9 sq. m (354.1 sq. ft)

Marsh & Parsons Notting Hill

2-6 Kensington Park Road,
London, W11 3BU
020 7313 2890