



LATCHMERE ROAD, SW11

£3,800 per month

Fantastic Location
Great Transport Links
Recently Refurbished
Private Decked Garden
Furnished
Available Immediately

@marshandparsons
marshandparsons.co.uk

MARSH &
PARSONS



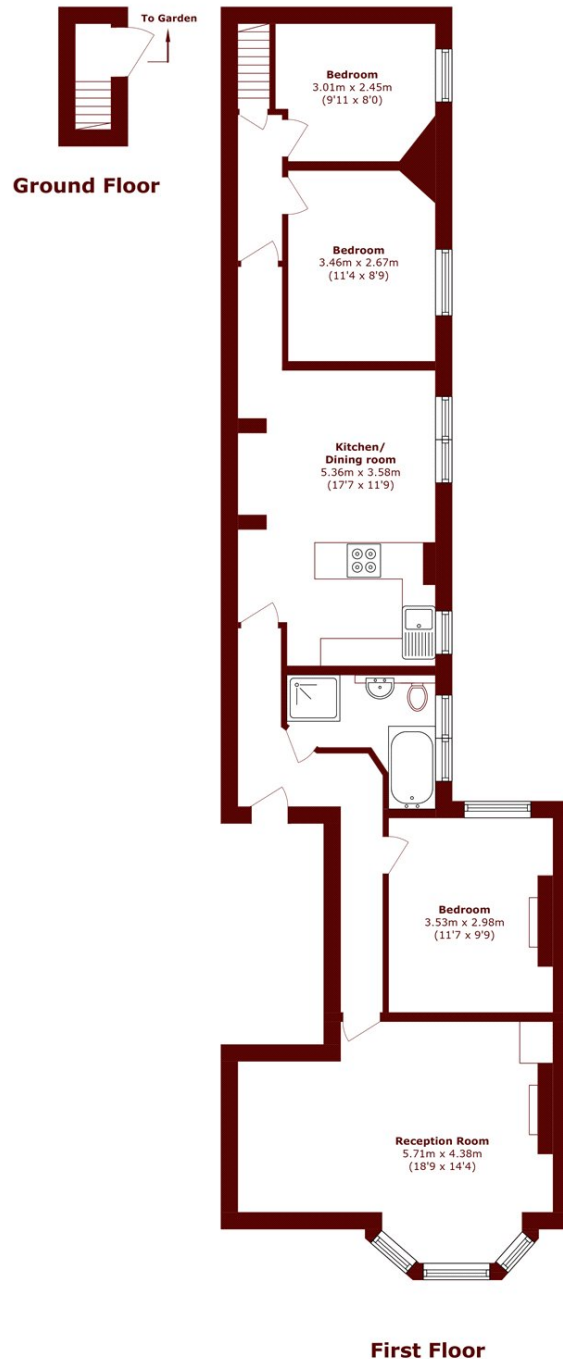
ABOUT THE PROPERTY

This lovely first floor Victorian conversion has been finished to a great standard. The bright and spacious flat comprises of two large double bedrooms, a smaller third double bedroom, modern kitchen with ample space for dining, a separate reception and a large bathroom. Further benefiting from wooden flooring, double-glazed windows and private rear decked garden.

Latchmere Road is located within easy access of Clapham Junction rail station, Clapham Common tube and the major bus routes along Lavender Hill.



STEP INSIDE LATCHMERE ROAD



Total area (approx.): 87.0 sq. m (936.4 sq. ft)

Battersea
020 7228 9292

Energy Rating: C We aim to make our particulars both accurate and reliable. However, they are not guaranteed; nor do they form part of an offer or contract. If you require clarification on any points then please contact us, especially if you're traveling some distance to view. Please note that appliances and heating systems have not been tested and therefore no warranties can be given as to their good working order

**MARSH &
PARSONS**