



BLACK PRINCE ROAD, SE11

£2,250 per month

One bedroom
One bathroom
Wooden flooring
Recently refurbished
Moments from the Albert Embankment
Near to the River Thames

@marshandparsons
marshandparsons.co.uk

MARSH &
PARSONS



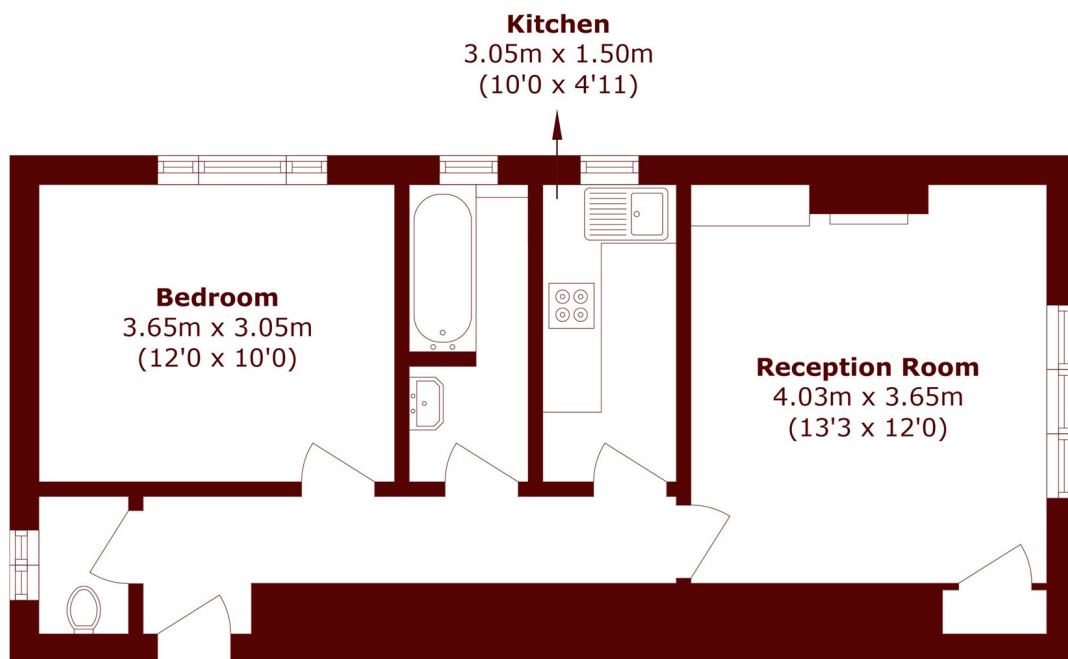
ABOUT THE PROPERTY

A well-presented one bedroom, one bathroom apartment forming part of a well-regarded residential development in Kennington. The accommodation is thoughtfully configured throughout, comprising a bright and comfortable reception room, a well-appointed kitchen, one good-sized bedroom and a neatly presented bathroom.

Situated at the foot of Black Prince Road, the property sits moments from the Albert Embankment and the River Thames, placing residents in a well-connected and picturesque pocket of South London. The area is excellently served by numerous bus routes providing straightforward access to Vauxhall, Waterloo,



STEP INSIDE BLACK PRINCE ROAD



First Floor

Total area (approx.): 47.6 sq. m (512.3 sq. ft)

Kennington
020 7932 2920

Energy Rating: C We aim to make our particulars both accurate and reliable. However, they are not guaranteed; nor do they form part of an offer or contract. If you require clarification on any points then please contact us, especially if you're traveling some distance to view. Please note that appliances and heating systems have not been tested and therefore no warranties can be given as to their good working order

**MARSH &
PARSONS**