



RIVERVIEW GARDENS, SW13

£1,400,000

Scenic river views
Three double bedrooms
Two bathrooms
Two balconies
Communal gardens
Riverside

@marshandparsons
marshandparsons.co.uk

MARSH &
PARSONS



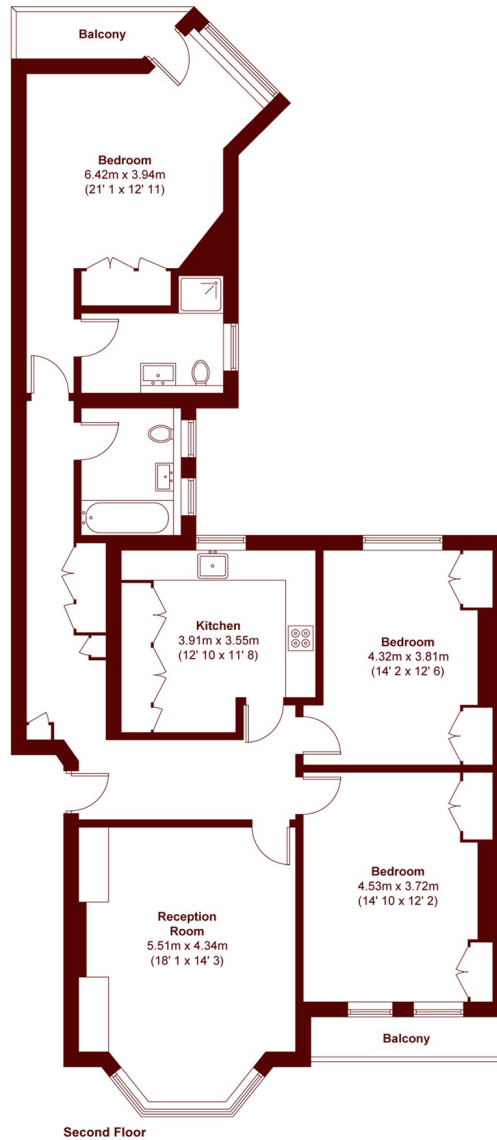
ABOUT THE PROPERTY

Marsh & Parsons are delighted to represent this beautifully refurbished top-floor, three-bedroom flat set within a sought-after mansion block, just moments from the River Thames, with beautiful direct river views.

The property offers well-balanced and spacious accommodation throughout, including a generous master bedroom at the rear with direct access to a private balcony overlooking the river, creating a peaceful retreat. There are two further well-proportioned double bedrooms, both with fitted wardrobes, providing ample storage.



STEP INSIDE RIVERVIEW GARDENS



APPROX. GROSS INTERNAL FLOOR AREA = 1323 SQFT / 122.9 SQM
APPROX. GROSS EXTERNAL BALCONY AREA = 62 SQFT / 5.8 SQM

Barnes & East Sheen
020 8563 8333

Energy Rating: E We aim to make our particulars both accurate and reliable. However, they are not guaranteed; nor do they form part of an offer or contract. If you require clarification on any points then please contact us, especially if you're traveling some distance to view. Please note that appliances and heating systems have not been tested and therefore no warranties can be given as to their good working order

**MARSH &
PARSONS**