



AKERMAN ROAD, SW9

£975,000

Three bedroom house

End of terrace

Large garden

Good condition

Close to transport

Side access

@marshandparsons
marshandparsons.co.uk

MARSH &
PARSONS

ABOUT THE PROPERTY

Amassing 1259sqft, is this three bedroom end of terrace house with large garden with side access on Akerman Road. Offering three double bedrooms, double reception great for dining and entertaining with well conditioned kitchen and utility room.

Akerman Road is very well located close to Myatts Field Park for leisure and within walking distance to Loughborough Junction, Brixton and Oval stations.



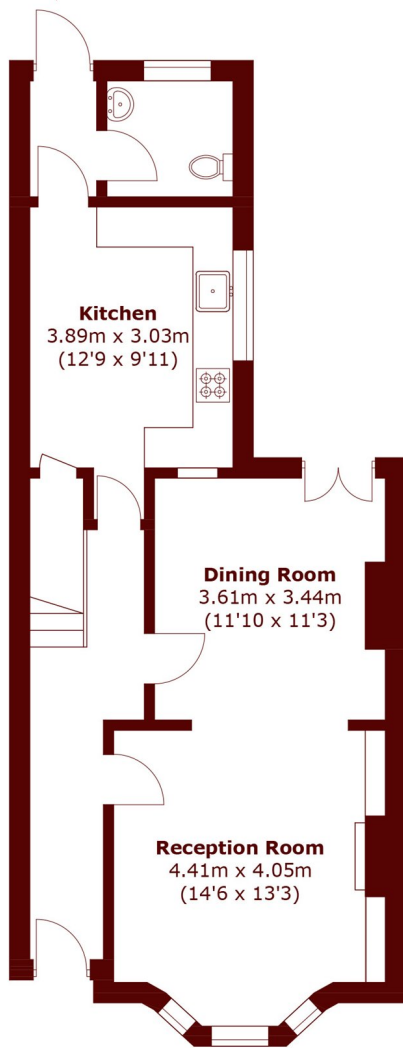




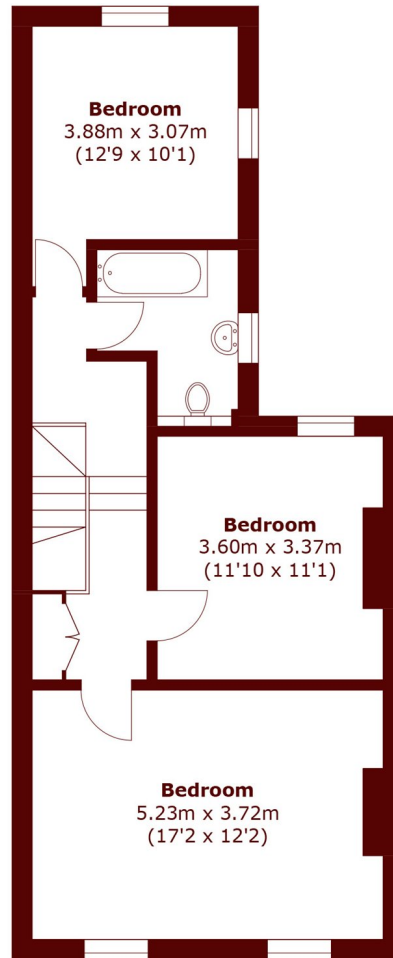


STEP INSIDE AKERMAN ROAD

To Garden



Ground Floor



First Floor

Total area (approx.): 117.0 sq. m (1,259.4 sq. ft)

Kennington
020 7587 1533

Energy Rating: C We aim to make our particulars both accurate and reliable. However, they are not guaranteed; nor do they form part of an offer or contract. If you require clarification on any points then please contact us, especially if you're traveling some distance to view. Please note that appliances and heating systems have not been tested and therefore no warranties can be given as to their good working order

**MARSH &
PARSONS**