



## BRONDES BURY VILLAS, NW6

£450,000

Situated on the raised ground floor of an elegant period conversion, this exceptionally spacious one-bedroom apartment beautifully retains its original character. Period features include impressive double-height

One Bedroom

Raised Ground Floor

Large Reception Room

High Ceilings

Working Fireplace

Excellent Transport Links

@marshandparsons  
marshandparsons.co.uk

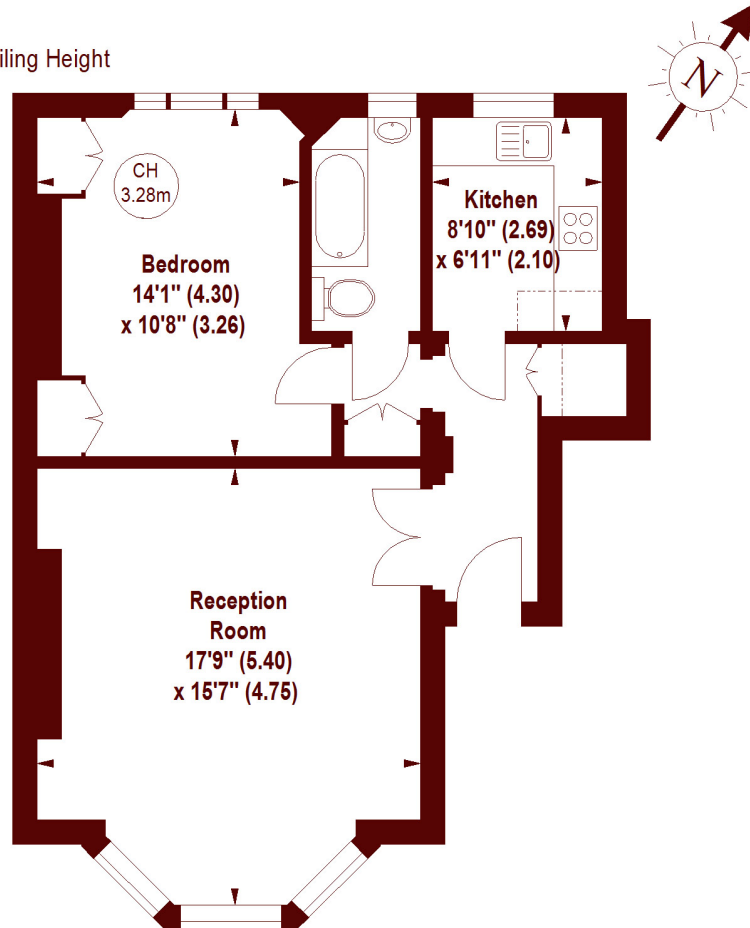
MARSH &  
PARSONS

# STEP INSIDE BRONDESBURY VILLAS

## Brondesbury Villas, NW6

APPROX. GROSS INTERNAL FLOOR AREA 603 SQFT / 56.02 SQM

Key :  
CH - Ceiling Height



The floor plan is not to scale and measurements and areas shown are approximate and therefore should be used for illustrative purposes only. The plan has been prepared in accordance with the RICS code of Measuring Practice and whilst we have confidence in the information produced, it must not be relied on.

If there is any aspect of particular importance, you should carry out or commission your own inspection of the property.

Copyright of FeaturePRO.

Queen's Park  
020 7624 4513

Energy Rating: C We aim to make our particulars both accurate and reliable. However, they are not guaranteed; nor do they form part of an offer or contract. If you require clarification on any points then please contact us, especially if you're traveling some distance to view. Please note that appliances and heating systems have not been tested and therefore no warranties can be given as to their good working order

MARSH &  
PARSONS