



BRACKENBURY ROAD, W6

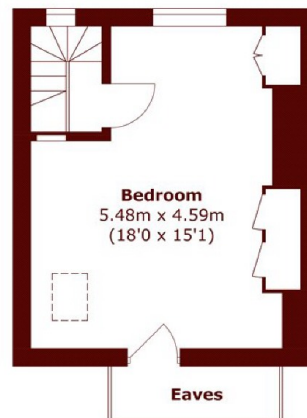
£900,000

This fabulous flat is set over three floors and spans over 1300sqft. It has a bright and open plan kitchen living area, a separate dining room that could be used as an additional bedroom or office, three further well

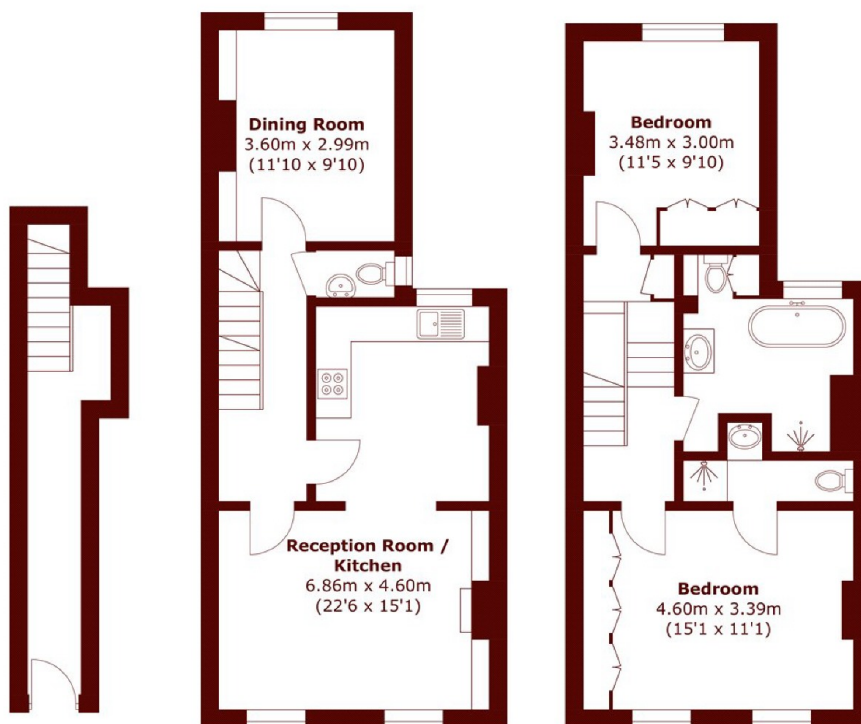
Three/ Four Bedrooms
Split Level
Open Plan Living

Sought After Location
No Onwards Chain
Brackenbury Village

STEP INSIDE BRACKENBURY ROAD



Third Floor



Ground Floor

First Floor

Second Floor

Total area (approx.): 124.1 sq. m (1,335.7 sq. ft)
(Excluding Eaves)

Brook Green
020 7605 7765

Energy Rating: We aim to make our particulars both accurate and reliable. However, they are not guaranteed; nor do they form part of an offer or contract. If you require clarification on any points then please contact us, especially if you're traveling some distance to view. Please note that appliances and heating systems have not been tested and therefore no warranties can be given as to their good working order

**MARSH &
PARSONS**