



CEDARS COURT, SW15

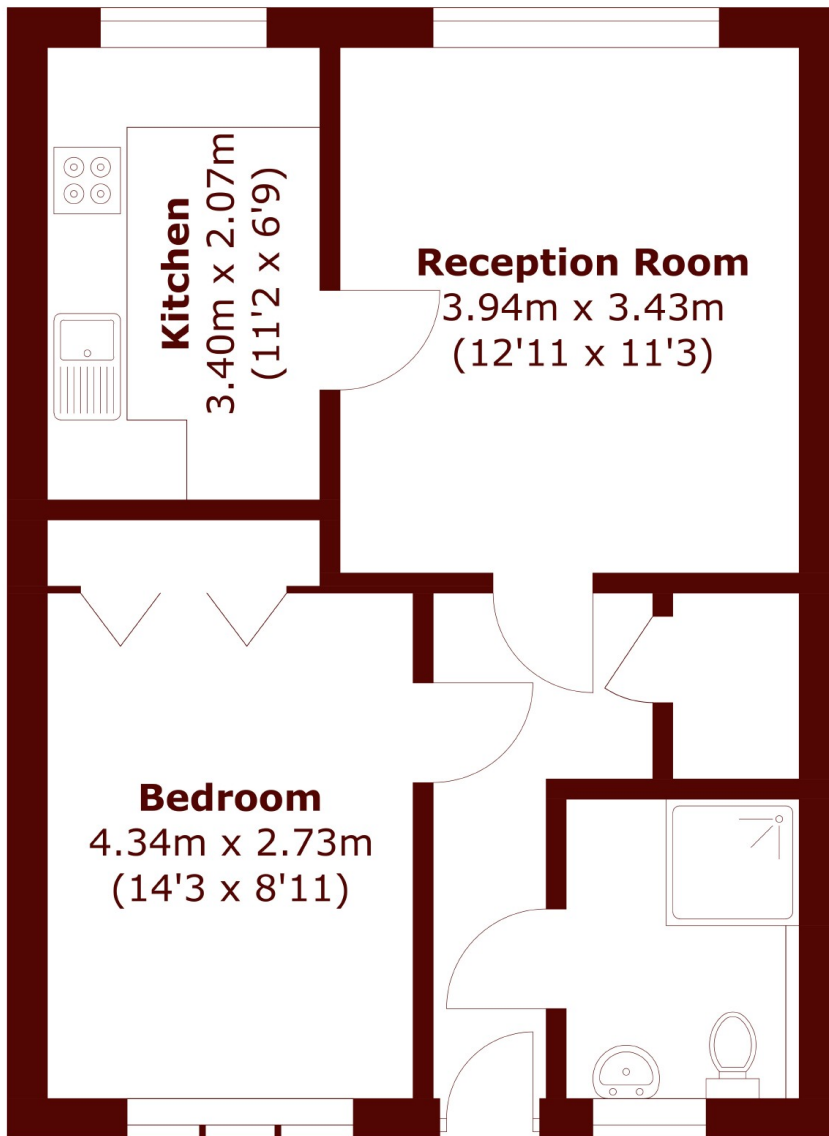
£160,000

This one bedroom top floor apartment with a lift is within close proximity to Roehampton Village and Richmond Park.

Over 55s development
One bedroom apartment
Lift access

Communal gardens
Top floor
Off street parking

STEP INSIDE CEDARS COURT



Total area (approx.): 44.7 sq. m (481.1 sq. ft)

Barnes & East Sheen
020 8563 8333

Energy Rating: C We aim to make our particulars both accurate and reliable. However, they are not guaranteed; nor do they form part of an offer or contract. If you require clarification on any points then please contact us, especially if you're traveling some distance to view. Please note that appliances and heating systems have not been tested and therefore no warranties can be given as to their good working order

**MARSH &
PARSONS**