



CHILTERN STREET, W1U

£1,000,000

- Two double bedrooms
- Two bathrooms
- Third floor with lift
- Quiet location
- Separate kitchen
- Marylebone village

@marshandparsons
marshandparsons.co.uk

MARSH &
PARSONS



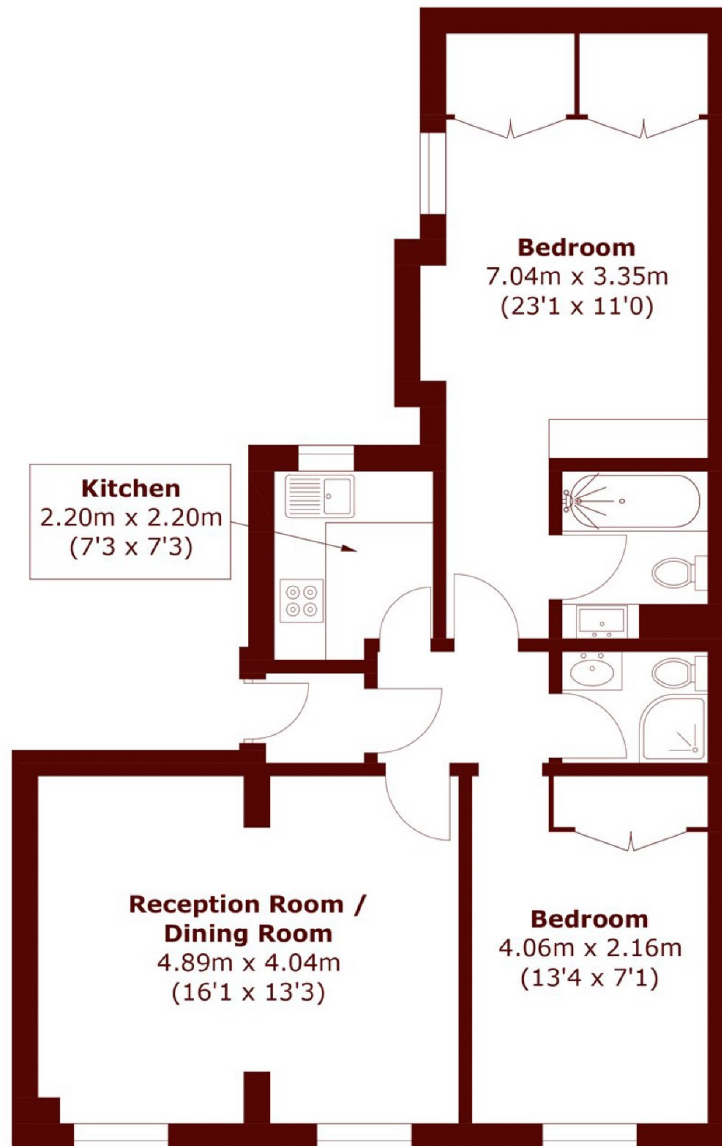
ABOUT THE PROPERTY

This immaculate apartment is situated on the third floor (with a lift) of a stunning block, the property comprises a large entrance hall which leads through to a modern, fully fitted kitchen and spacious double reception room with wood floors. Both double bedrooms are large in size with built in storage, the master benefiting from a contemporary en suite and there is a further second bathroom with walk in shower.

Situated in Marylebone Village, Chiltern Street is one of the most vibrant and sought after addresses in Marylebone with a range of boutiques, cafes and coffee shops.



STEP INSIDE CHILTERN STREET



Third Floor

Total area (approx.): 65.7 sq. m (707.2 sq. ft)

Marylebone & Mayfair
020 7935 1775

Energy Rating: D We aim to make our particulars both accurate and reliable. However, they are not guaranteed; nor do they form part of an offer or contract. If you require clarification on any points then please contact us, especially if you're traveling some distance to view. Please note that appliances and heating systems have not been tested and therefore no warranties can be given as to their good working order

MARSH &
PARSONS