



BROXHOLME HOUSE, SW6

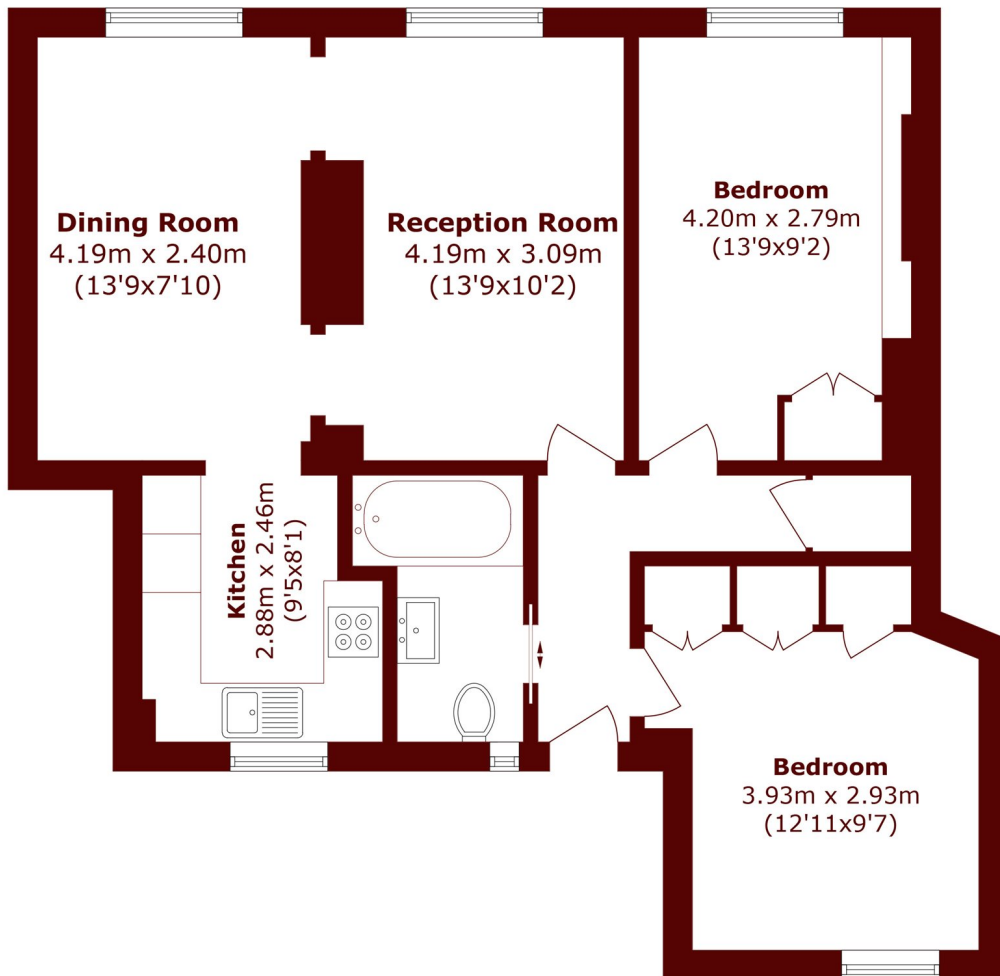
£500,000

This bright and well-proportioned two bedroom apartment offers generous living space in a highly convenient Fulham location. The property benefits from an abundance of natural light throughout, with a

Two Double Bedrooms
Near Fulham Broadway
Excellent Condition

Large Dining Space
Modern Kitchen
Very Bright

STEP INSIDE BROXHOLME HOUSE



Total area (approx.): 68.2 sq. m (734.1 sq. ft)

Fulham
020 7736 9822

Energy Rating: C We aim to make our particulars both accurate and reliable. However, they are not guaranteed; nor do they form part of an offer or contract. If you require clarification on any points then please contact us, especially if you're traveling some distance to view. Please note that appliances and heating systems have not been tested and therefore no warranties can be given as to their good working order

MARSH &
PARSONS