

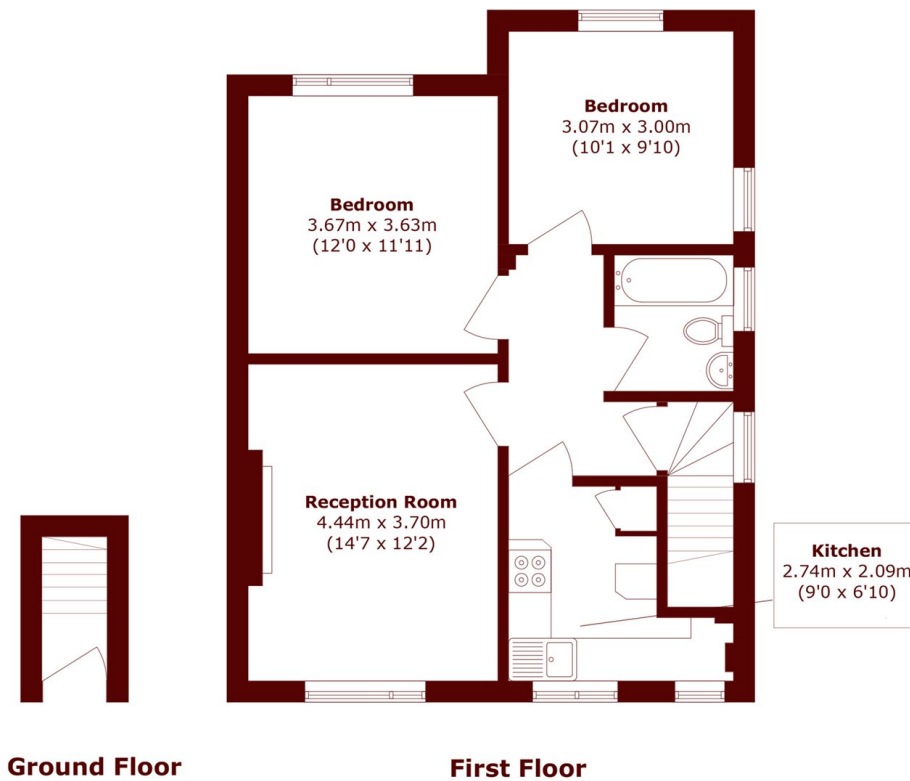


Christchurch Avenue, NW6

£2,200 pcm



- Two Double Bedrooms
- Private Entrance
- Wooden Flooring Throughout



Total area (approx.): 61.1 sq. m (657.6 sq. ft)

Marsh & Parsons Queens Park

56 Salusbury Road, London,
NW6 6NN
020 7624 4513