



LATCHMERE ROAD, SW11

£1,700 per month

A fantastic one bedroom apartment with stylish kitchen with sleek glossy units opening on to a reception with engineered wood flooring and dual aspect windows flooding the room with plenty of light.

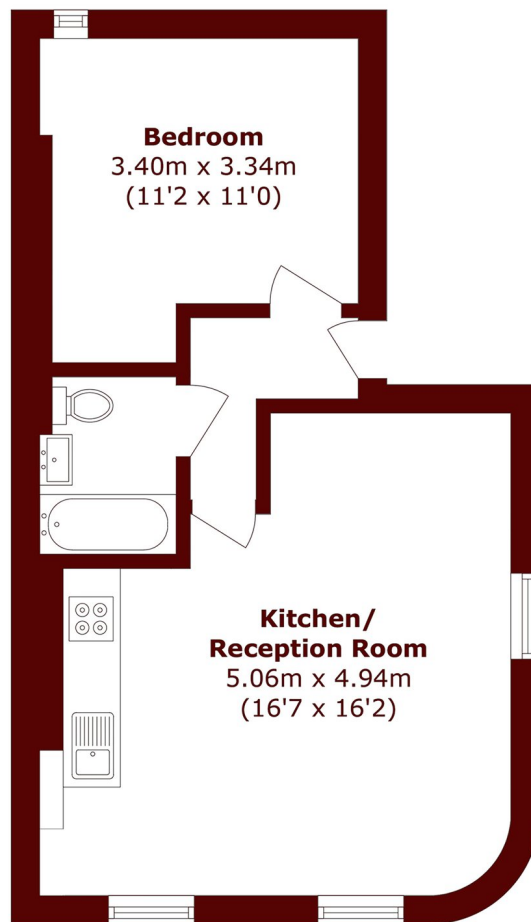
Superb One Bedroom Apartment
Light & Airy
Double Aspect Reception

Open Plan Kitchen
Contemporary Bathroom
Wood Floor

@marshandparsons
marshandparsons.co.uk

MARSH &
PARSONS

STEP INSIDE LATCHMERE ROAD



Total area (approx.): 37.9 sq. m (407.9 sq. ft)

Battersea
020 7228 9292

Energy Rating: C We aim to make our particulars both accurate and reliable. However, they are not guaranteed; nor do they form part of an offer or contract. If you require clarification on any points then please contact us, especially if you're traveling some distance to view. Please note that appliances and heating systems have not been tested and therefore no warranties can be given as to their good working order

**MARSH &
PARSONS**