



## REFORM STREET, SW11

£3,950 per month

Two bedrooms  
Close to Battersea Park  
Well finished throughout  
Furnished  
Great transport links  
Maisonette

@marshandparsons  
marshandparsons.co.uk

MARSH &  
PARSONS



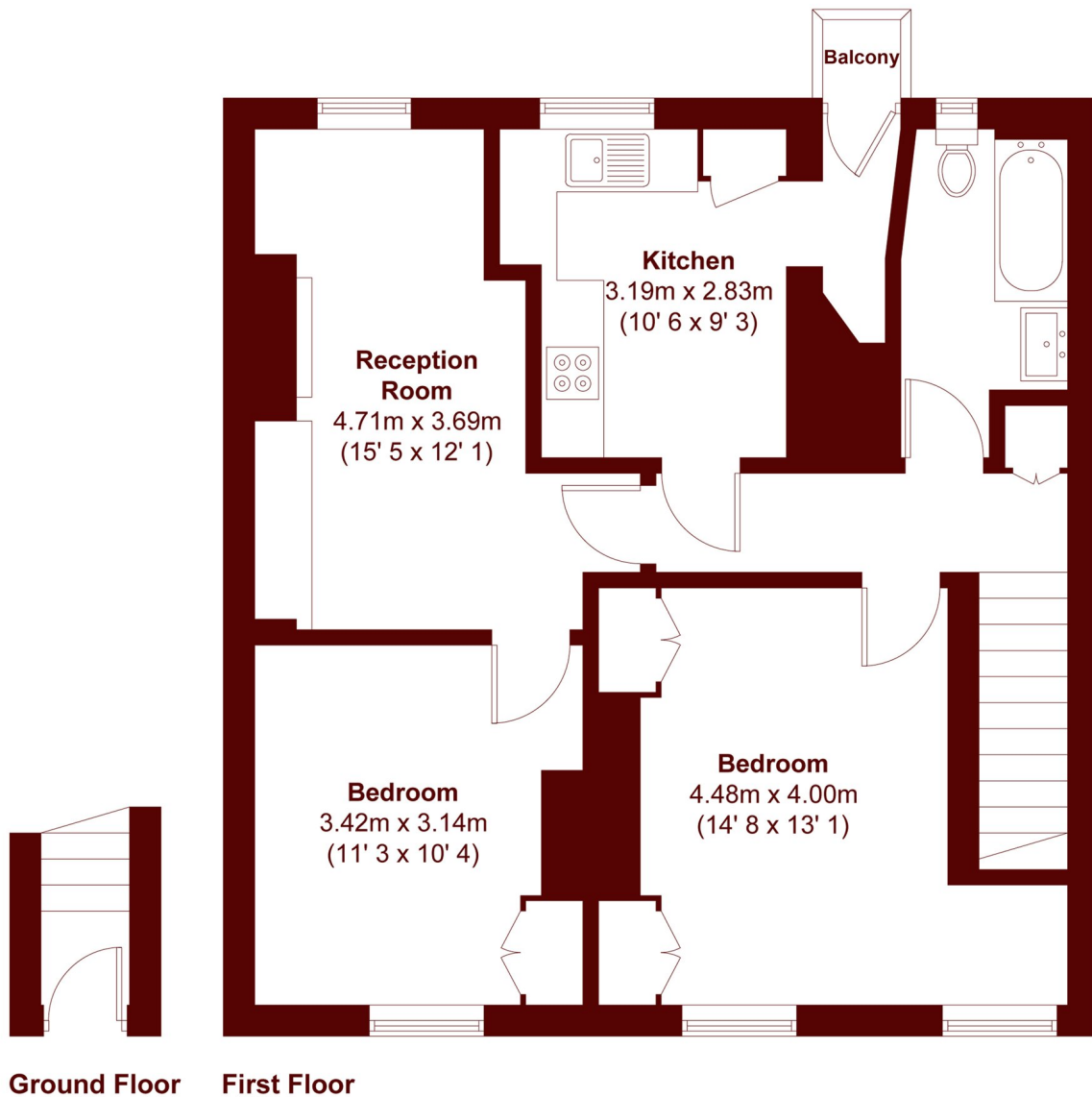
# ABOUT THE PROPERTY

This beautifully presented two-bedroom maisonette offers an exceptional amount of space and is flooded with natural light throughout. The property features a spacious and bright living room, alongside a separate modern kitchen with ample space for dining. There are two generously sized double bedrooms, both benefiting from built-in storage, as well as a stylish and contemporary bathroom.

Transport links are excellent with Clapham Junction station, which provides direct trains to Victoria, Waterloo and Gatwick airport, located just a short stroll away and frequent buses running from Battersea Park Road over the river into central London. The open space of Battersea



# STEP INSIDE REFORM STREET



APPROX. GROSS INTERNAL FLOOR AREA 724 SQFT / 67.3 SQM  
APPROX. GROSS EXTERNAL BALCONY AREA 6 SQFT / 0.6 SQM

**Battersea**  
020 7228 9292

Energy Rating: D We aim to make our particulars both accurate and reliable. However, they are not guaranteed; nor do they form part of an offer or contract. If you require clarification on any points then please contact us, especially if you're traveling some distance to view. Please note that appliances and heating systems have not been tested and therefore no warranties can be given as to their good working order

**MARSH &  
PARSONS**