



ELM GROVE, SW19

£1,850 per month

One bedroom
Modern
Open plan
Off-street parking
Close to station
Energy rating: b

@marshandparsons
marshandparsons.co.uk

MARSH &
PARSONS



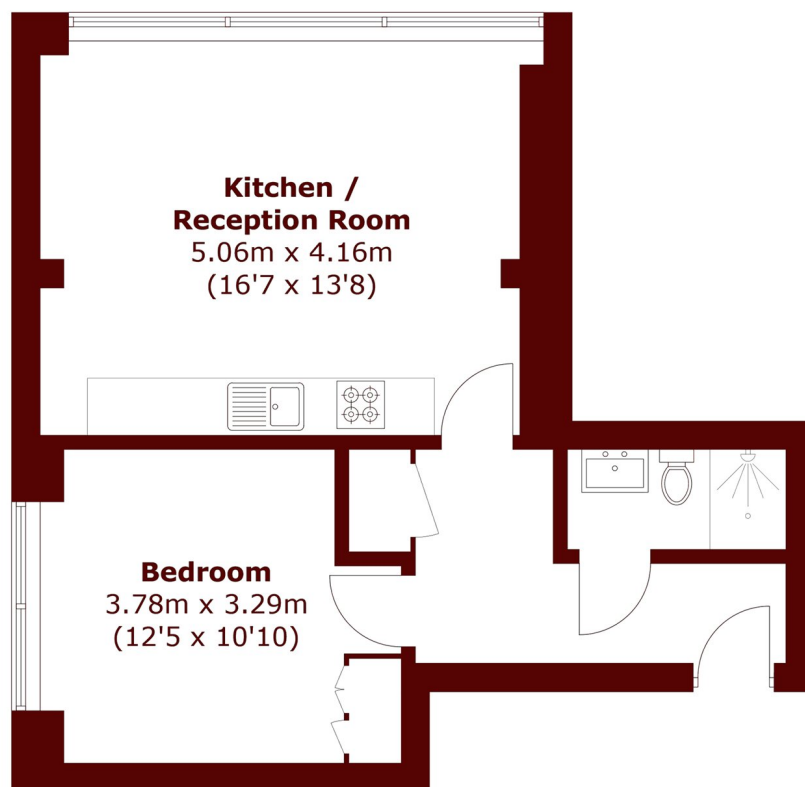
ABOUT THE PROPERTY

A one bedroom apartment within this secure modern development offering an open plan modern kitchen / reception room with wooden flooring, a double bedroom with built-in wardrobes and a family bathroom.

The property is located half a mile from Wimbledon station.



STEP INSIDE ELM GROVE



Total area (approx.): 43.5 sq. m (468.2 sq. ft)

Wimbledon
020 8879 6661

Energy Rating: B We aim to make our particulars both accurate and reliable. However, they are not guaranteed; nor do they form part of an offer or contract. If you require clarification on any points then please contact us, especially if you're traveling some distance to view. Please note that appliances and heating systems have not been tested and therefore no warranties can be given as to their good working order

MARSH &
PARSONS