



UPPER PARK ROAD, NW3

£1,500,000

Two Bedrooms
Two Bathrooms
Shared Garden
Private Terrace
Share of Freehold
958 Year Lease

@marshandparsons
marshandparsons.co.uk

MARSH &
PARSONS



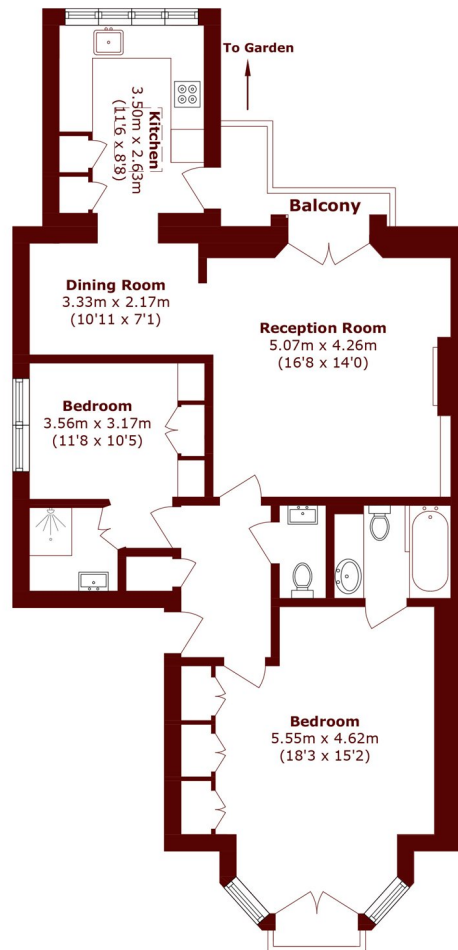
ABOUT THE PROPERTY

Set within the leafy, village-like charm of Belsize Park, this exceptional period conversion beautifully marries timeless architectural character with refined contemporary living. Occupying an elegant historic building, the property showcases an abundance of original features, from high ceilings and large sash windows to intricate detailing, thoughtfully complemented by stylish modern finishes.

Perfectly positioned on a quiet residential street, yet just moments from the vibrant cafés, boutiques, and transport links of Belsize Park, this home offers the rare combination of peaceful seclusion and urban convenience.



STEP INSIDE UPPER PARK ROAD



Total area (approx.): 83.4 sq. m (897.7 sq. ft)
Balcony Total (approx.): 2.7 sq. m (29.0 sq. ft)

Camden
020 7244 2200

Energy Rating: D We aim to make our particulars both accurate and reliable. However, they are not guaranteed; nor do they form part of an offer or contract. If you require clarification on any points then please contact us, especially if you're traveling some distance to view. Please note that appliances and heating systems have not been tested and therefore no warranties can be given as to their good working order

MARSH &
PARSONS