



FERNDALE ROAD, SW4

£2,250 per month

One bedroom
One bathroom
Private garden
Modern finish
High ceilings
Close to transport

@marshandparsons
marshandparsons.co.uk

MARSH &
PARSONS



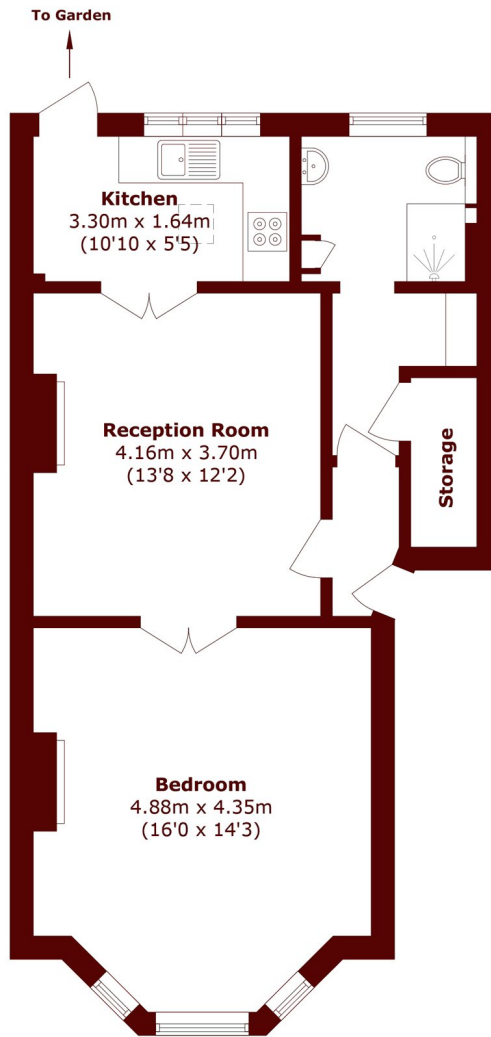
ABOUT THE PROPERTY

A beautifully presented one bedroom property featuring a sleek modern kitchen and bathroom, impressive high ceilings, and a spacious private patio garden.

Transport links are superb, with Clapham North underground station and Clapham High Street railway station both just a short walk away, providing easy access across London.



STEP INSIDE FERNDALE ROAD



Total area (approx.): 54.4 sq. m (585.5 sq. ft)

Clapham
020 7501 3667

Energy Rating: C We aim to make our particulars both accurate and reliable. However, they are not guaranteed; nor do they form part of an offer or contract. If you require clarification on any points then please contact us, especially if you're traveling some distance to view. Please note that appliances and heating systems have not been tested and therefore no warranties can be given as to their good working order

**MARSH &
PARSONS**