



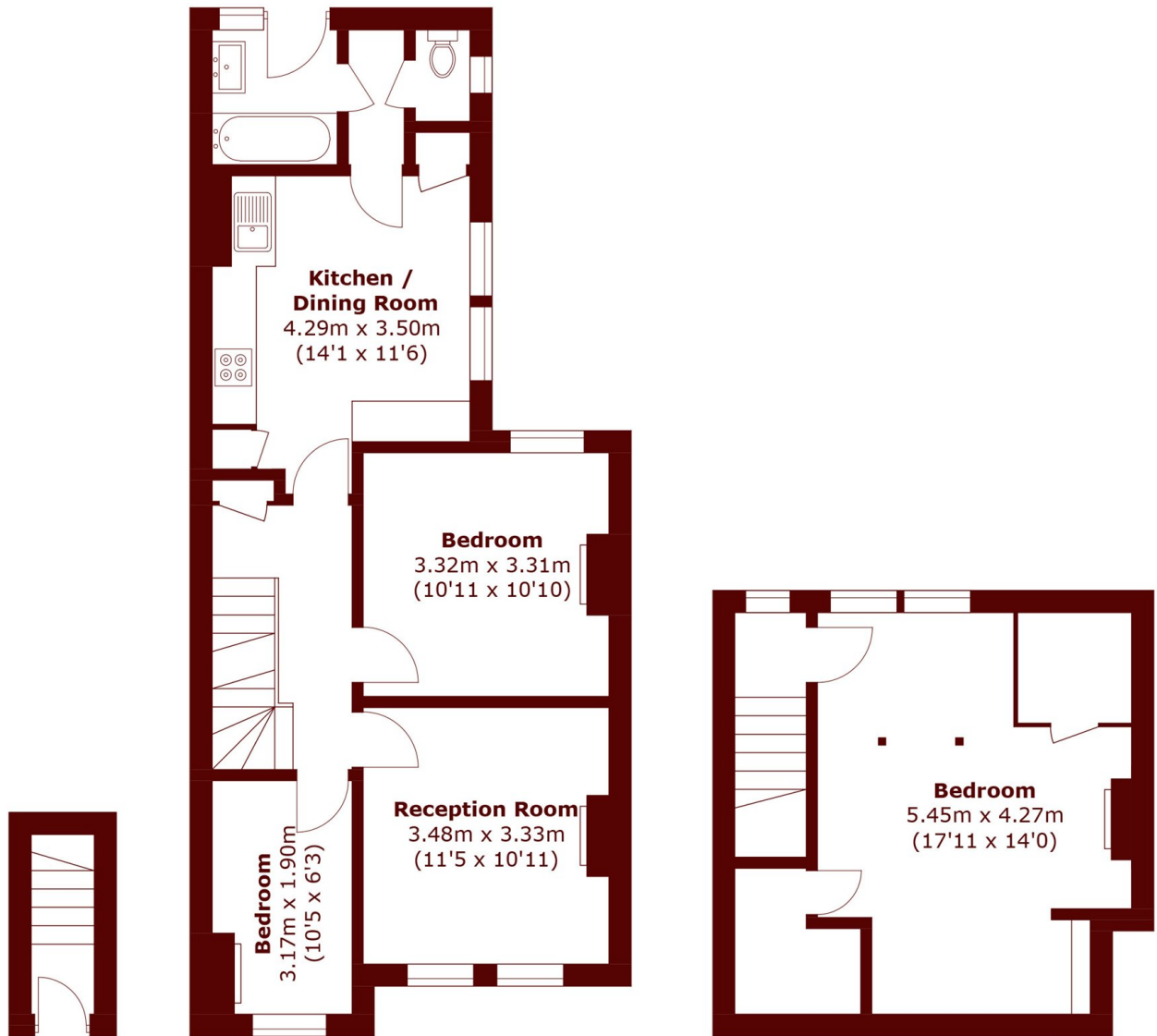
Lydhurst Avenue, SW2

£550,000



- Three bedrooms
- Over 1000 sq ft
- Period split-level maisonette
- Eat-in kitchen diner

- Top floor flat
- EPC: D



Ground Floor

First Floor

Second Floor

Total area (approx.): 89.7 sq. m (965.3 sq. ft)

Marsh & Parsons Streatham

113-117 Streatham Hill,
London, SW2 4UG
020 8671 0171

We aim to make our particulars both accurate and reliable. However, they are not guaranteed; nor do they form part of an offer or contract. If you require clarification on any points then please contact us, especially if you're traveling some distance to view. Please note that appliances and heating systems have not been tested and therefore no warranties can be given as to their good working order.