



WANDSWORTH BRIDGE ROAD, SW6

£1,150,000

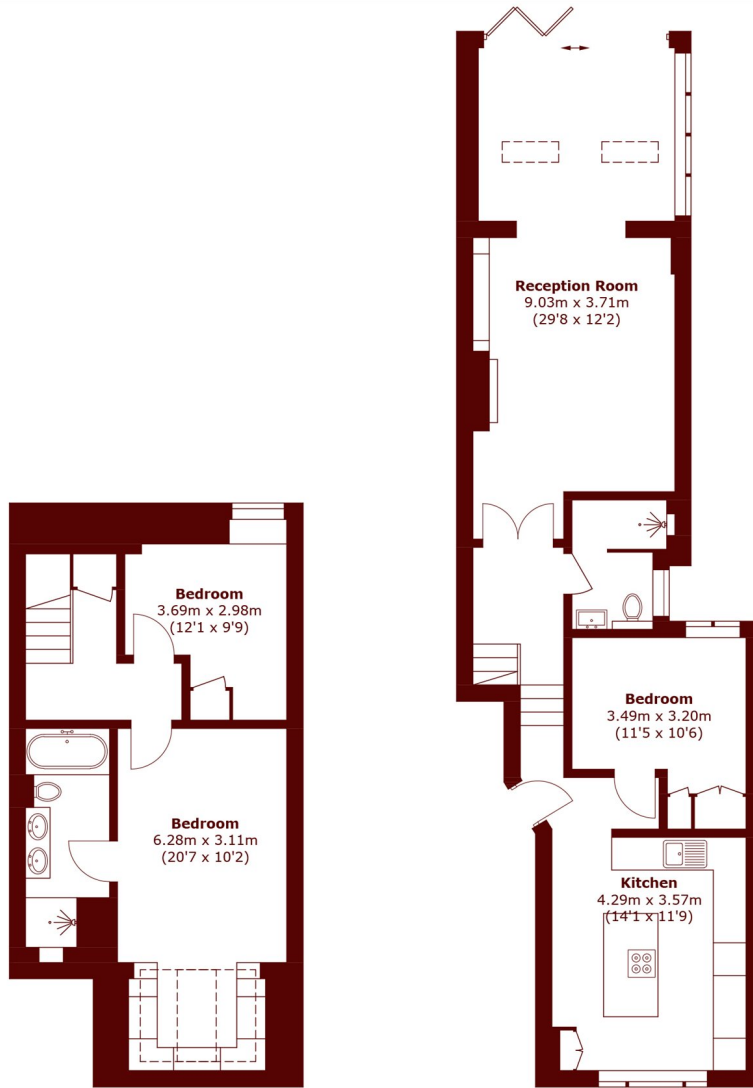
An immaculate three bedroom, two bathroom split-level garden flat located in the highly sought after Parsons Green area.

Large garden
Excellent condition
Three bedrooms

Share of freehold
Near Eel Brook Common
Parsons Green

STEP INSIDE

WANDSWORTH BRIDGE ROAD



Lower Ground Floor

Ground Floor

Total area (approx.): 112.8 sq. m (1,214.2 sq. ft)

Fulham
020 7736 9822

Energy Rating: C We aim to make our particulars both accurate and reliable. However, they are not guaranteed; nor do they form part of an offer or contract. If you require clarification on any points then please contact us, especially if you're traveling some distance to view. Please note that appliances and heating systems have not been tested and therefore no warranties can be given as to their good working order

**MARSH &
PARSONS**