



BRONDESBURY PARK, NW6

£6,000,000

Detached House
Seven Bedrooms
Formal Reception Room
South West Facing Garden
Conservatory
Gated Driveway

@marshandparsons
marshandparsons.co.uk

MARSH &
PARSONS

ABOUT THE PROPERTY

An exceptional detached house with seven bedrooms and a south west facing garden, located on the prestigious Brondesbury Park. The property is positioned behind a securely gated driveway and boundary, is arranged over three floors, with a grand hallway upon entrance.

Brondesbury Park is a residential road near to the amenities and green open spaces in Queen's Park, with West Hampstead and Willesden Green close by. Transport links include Brondesbury Park (Overground) and Willesden Green (Jubilee).

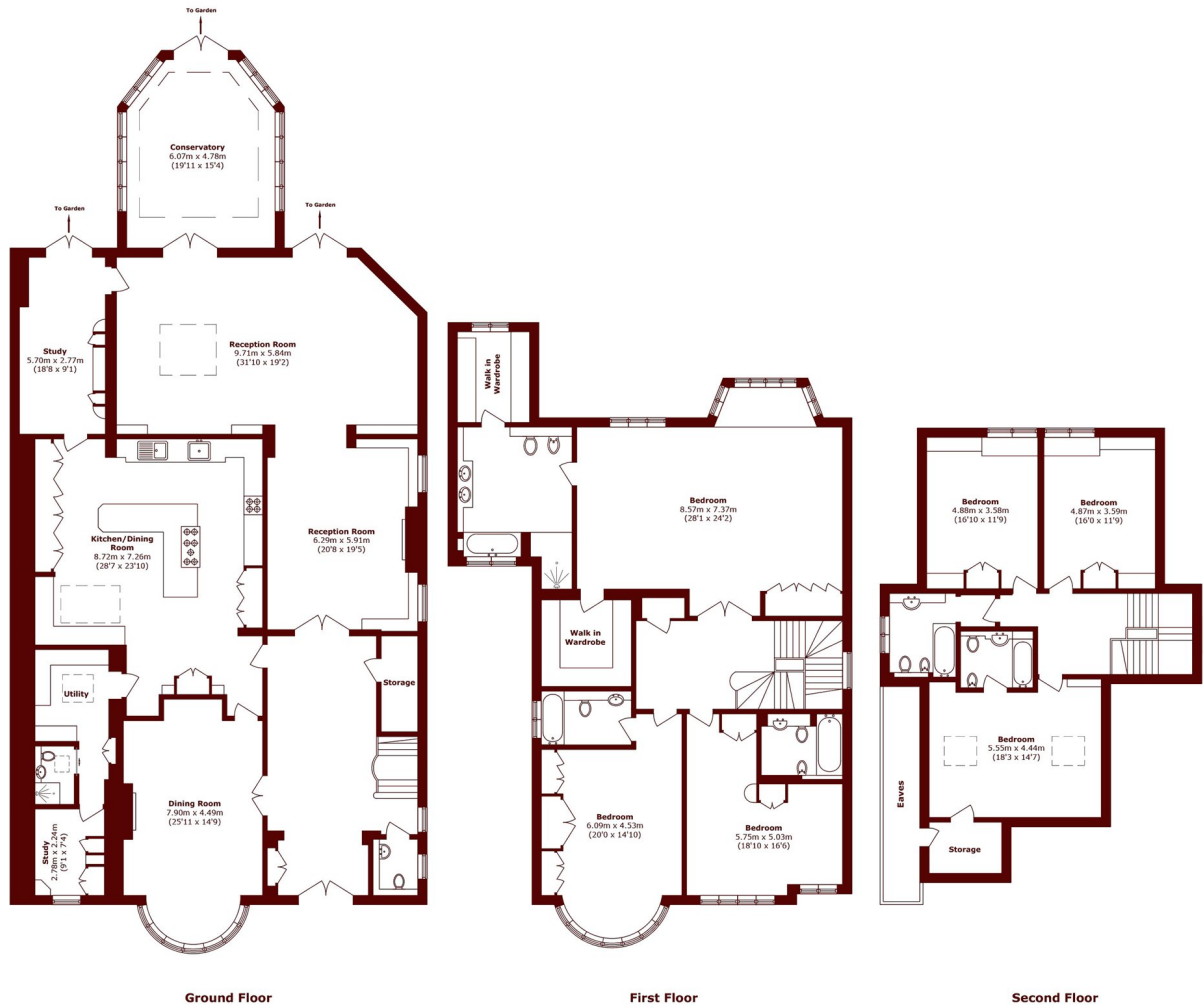








STEP INSIDE BRONDESBURY PARK



Total area (approx.): 559.1 sq. m (6018.1 sq. ft)
(Excluding Eaves)

Queen's Park
020 7624 4513

Energy Rating: D We aim to make our particulars both accurate and reliable. However, they are not guaranteed; nor do they form part of an offer or contract. If you require clarification on any points then please contact us, especially if you're traveling some distance to view. Please note that appliances and heating systems have not been tested and therefore no warranties can be given as to their good working order

MARSH &
PARSONS