



WORPLE ROAD, SW19

£2,800 per month

Gated development
Two bedrooms
Two bathrooms
Underground parking
Porter service
Energy rating: c

@marshandparsons
marshandparsons.co.uk

MARSH &
PARSONS



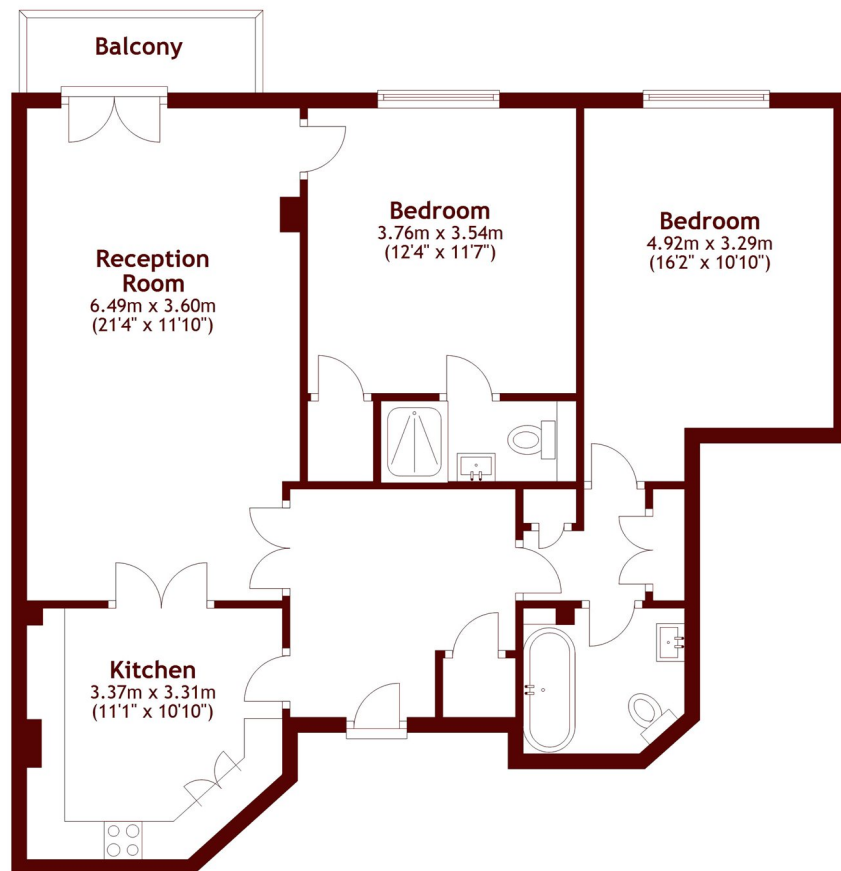
ABOUT THE PROPERTY

The property offers a living/dining room, fitted kitchen, principal bedroom with en-suite bathroom, a further double bedroom and a family bathroom. This gated development also benefits from underground parking and a 24 hour porter service.

Located close to Wimbledon station and all the amenities of the town centre.



STEP INSIDE WORPLE ROAD



Main area: Approx. 84.3 sq. metres (907.6 sq. feet)
Plus balconies, approx. 3.3 sq. metres (35.3 sq. feet)

Wimbledon
020 8879 6661

Energy Rating: C We aim to make our particulars both accurate and reliable. However, they are not guaranteed; nor do they form part of an offer or contract. If you require clarification on any points then please contact us, especially if you're traveling some distance to view. Please note that appliances and heating systems have not been tested and therefore no warranties can be given as to their good working order

MARSH &
PARSONS