



JOHN AIRD COURT, W2

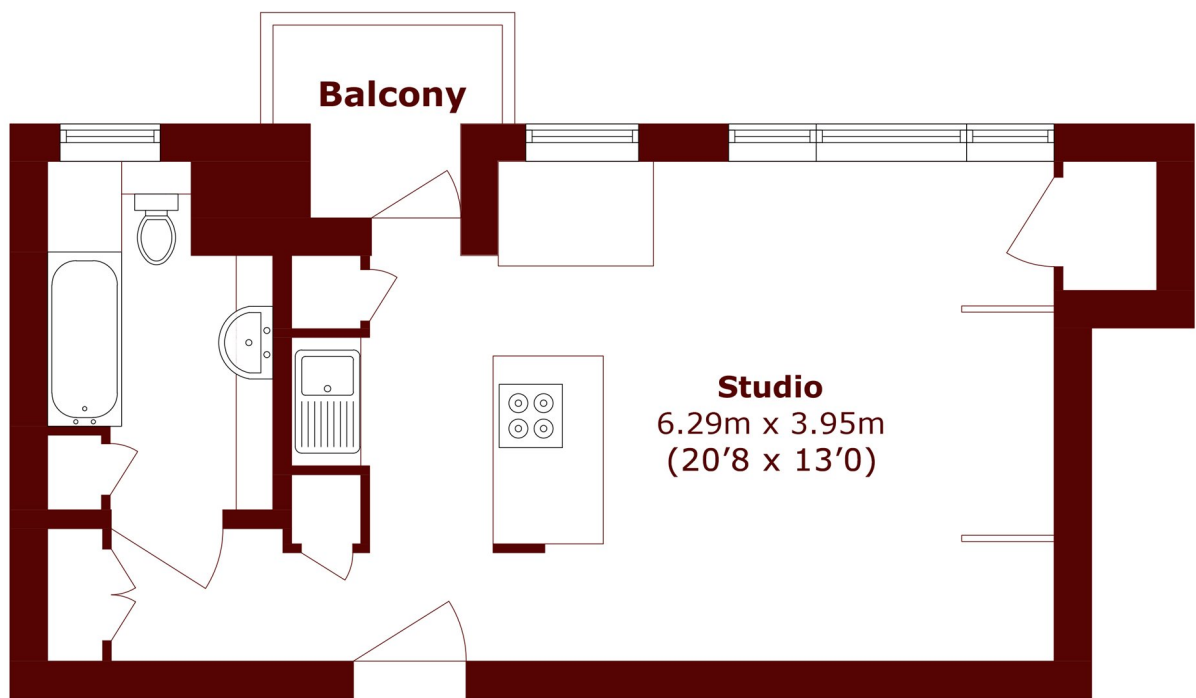
£350,000

A delightful, bright and generously sized studio, recently refurbished to exacting standards and in turn key condition. The apartment has been thoughtfully renovated to create a stylish and highly functional living

Large Studio
First Floor
Recently Refurbished

Fully Fitted Kitchen
Private Balcony
Short walk to Paddington Station

STEP INSIDE JOHN AIRD COURT



First Floor

Total area (approx.): 31.5 sq. m (339.0 sq. ft)

Balcony area (approx.): 2.3 sq. m (24.7 sq. ft)

Little Venice
020 7993 3050

Energy Rating: D We aim to make our particulars both accurate and reliable. However, they are not guaranteed; nor do they form part of an offer or contract. If you require clarification on any points then please contact us, especially if you're traveling some distance to view. Please note that appliances and heating systems have not been tested and therefore no warranties can be given as to their good working order

MARSH &
PARSONS