



DARTMOUTH TERRACE, SE10

£475,000

Top floor apartment
Victorian conversion
One bedroom
High ceilings
Large residents only garden
Energy rating: d

@marshandparsons
marshandparsons.co.uk

MARSH &
PARSONS



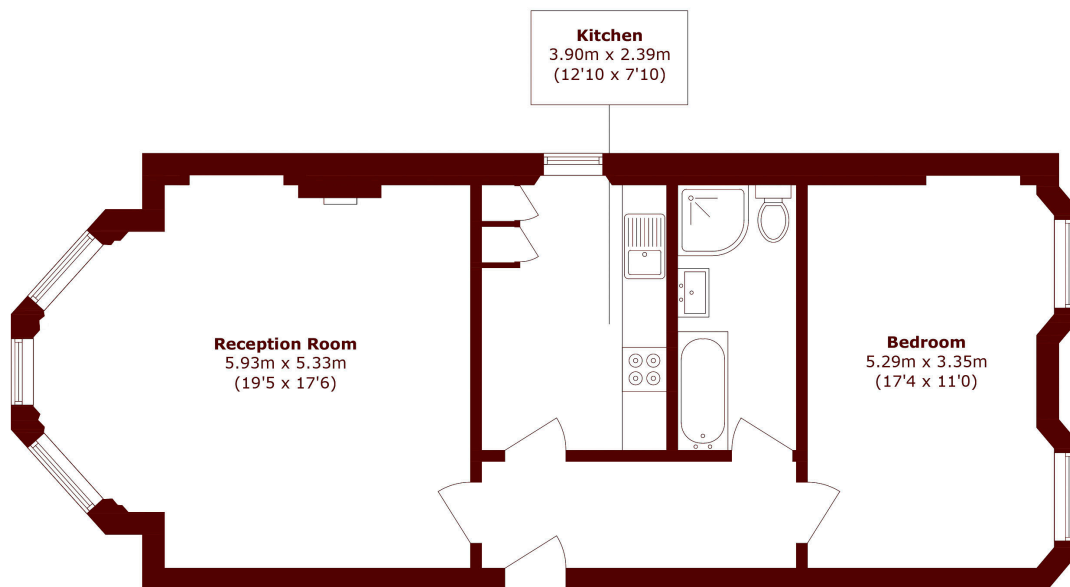
ABOUT THE PROPERTY

Top floor Victorian conversion apartment, featuring direct views across the Heath and a large west facing residents only garden. The interior comprises a spacious living room which overlooks the Heath. A separate kitchen, bathroom suite and a large bedroom. Further stand out features include sash windows, high ceilings, gas central heating, combination boiler and the property is offered in immaculate condition.

Blackheath village is a very short walk away, across the Heath, where you will find Blackheath mainline station, a wide range of restaurants, pubs and shopping facilities. Greenwich town centre is within easy walking distance, through Greenwich park.



STEP INSIDE DARTMOUTH TERRACE



Total area (approx.): 69.2 sq. m (744.9 sq. ft)

Greenwich
020 8312 8312

Energy Rating: D We aim to make our particulars both accurate and reliable. However, they are not guaranteed; nor do they form part of an offer or contract. If you require clarification on any points then please contact us, especially if you're traveling some distance to view. Please note that appliances and heating systems have not been tested and therefore no warranties can be given as to their good working order

MARSH &
PARSONS