



PARK STREET, SW6

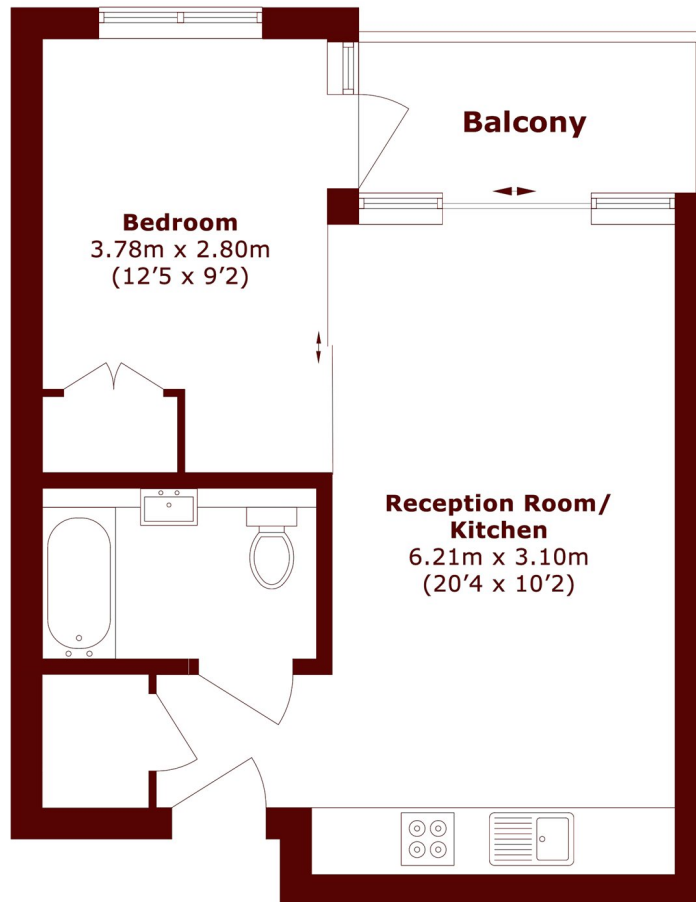
£310,635

53.1% Council Shared Equity Available, no rent payable on the unowned %

Chelsea Creek
Balcony
Concierge

Double bedroom
Access to gym and pool
Energy rating: c

STEP INSIDE PARK STREET



Second Floor

Total area (approx.): 40.6 sq. m (437.0 sq. ft)

Balcony area (approx.): 5.1 sq. m (54.9 sq. ft)

Fulham
020 7736 9822

Energy Rating: C We aim to make our particulars both accurate and reliable. However, they are not guaranteed; nor do they form part of an offer or contract. If you require clarification on any points then please contact us, especially if you're traveling some distance to view. Please note that appliances and heating systems have not been tested and therefore no warranties can be given as to their good working order

MARSH &
PARSONS