



# RICHMOND PARK ROAD, SW14

£450,000

- One double bedroom
- High specification
- Natural light
- Acoustic double glazing
- Additional storage
- Parkside

@marshandparsons  
marshandparsons.co.uk

MARSH &  
PARSONS



# ABOUT THE PROPERTY

Marsh & Parsons are pleased to present this beautifully appointed one-bedroom apartment, occupying the second floor in the heart of East Sheen.

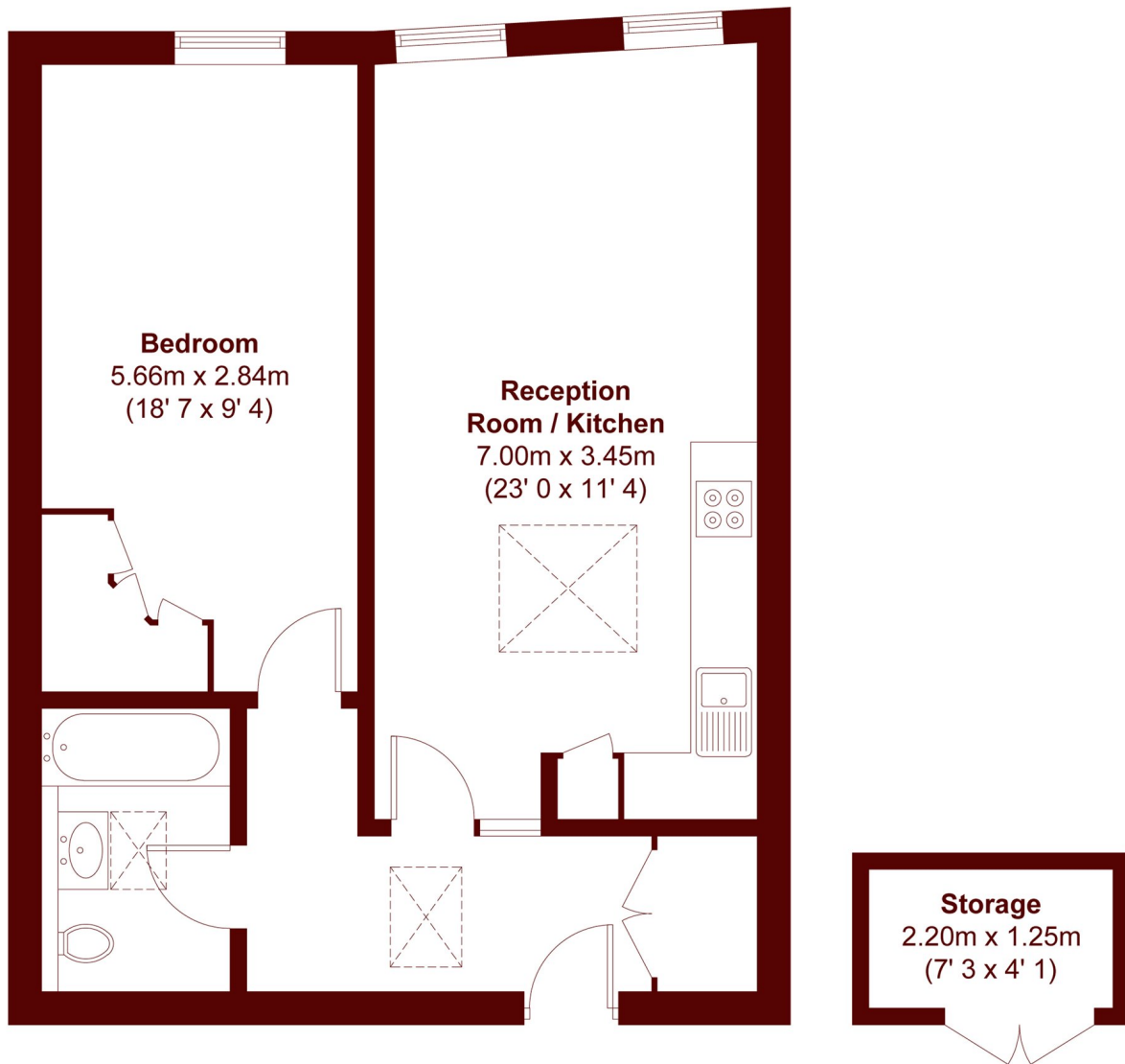
One of seven flats, the property retains the character and solidity of its origins with high ceilings, while delivering a thoroughly contemporary finish throughout, including superior 42db acoustic double glazing.

Flooded with natural light via generous roof lights, the apartment features engineered hardwood herringbone flooring, a stylish fully fitted kitchen, a well-appointed



# STEP INSIDE

## RICHMOND PARK ROAD



APPROX. GROSS INTERNAL FLOOR AREA = 584 SQFT / 54.3 SQM  
APPROX. GROSS EXTERNAL STORAGE AREA = 29 SQFT / 2.7 SQM

**Barnes & East Sheen**  
020 8563 8333

Energy Rating: C We aim to make our particulars both accurate and reliable. However, they are not guaranteed; nor do they form part of an offer or contract. If you require clarification on any points then please contact us, especially if you're traveling some distance to view. Please note that appliances and heating systems have not been tested and therefore no warranties can be given as to their good working order

**MARSH &  
PARSONS**