



## COURTFIELD GARDENS, SW5

£1,000,000

Two double bedrooms  
Two bathrooms  
Garden square access  
Lift  
Stucco fronted  
Energy rating c

@marshandparsons  
marshandparsons.co.uk

MARSH &  
PARSONS



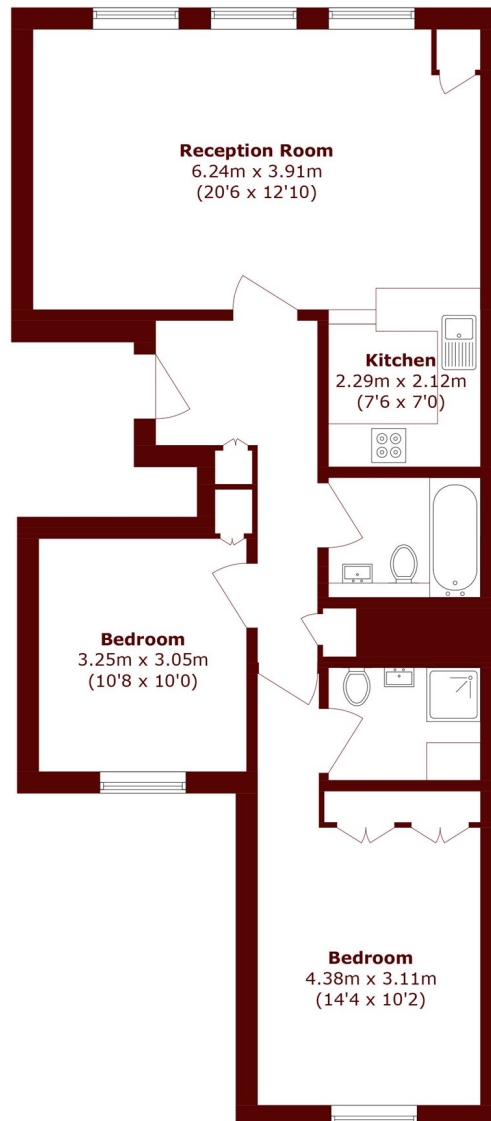
# ABOUT THE PROPERTY

A charming two bedroom, two bathroom apartment overlooking private garden square Courtfield Gardens, located on the third floor with a lift. The master bedroom benefits from an en suite and there is ample storage throughout with the open plan L-shape reception room further complimented by three windows overlooking the communal gardens.

The property is well-positioned close to Gloucester Road, with its vast variety of shops and services. The nearest rail stations are Gloucester Road and Earl's Court (District, Circle and Piccadilly Lines) and West Brompton (Overland). The A4 is very close for those motorists looking for easy access out of London.



# STEP INSIDE COURTFIELD GARDENS



Total area (approx.): 71.0 sq. m (764.2 sq. ft)

**Earls Court**  
020 7244 2210

Energy Rating: C We aim to make our particulars both accurate and reliable. However, they are not guaranteed; nor do they form part of an offer or contract. If you require clarification on any points then please contact us, especially if you're traveling some distance to view. Please note that appliances and heating systems have not been tested and therefore no warranties can be given as to their good working order

**MARSH &  
PARSONS**