



MAIDA VALE, W9

£375,000

One Bedroom Apartment

Excellent condition

Approx. 579sq ft

Fitted Kitchen

Leasehold

Close to amenities

@marshandparsons
marshandparsons.co.uk

MARSH &
PARSONS



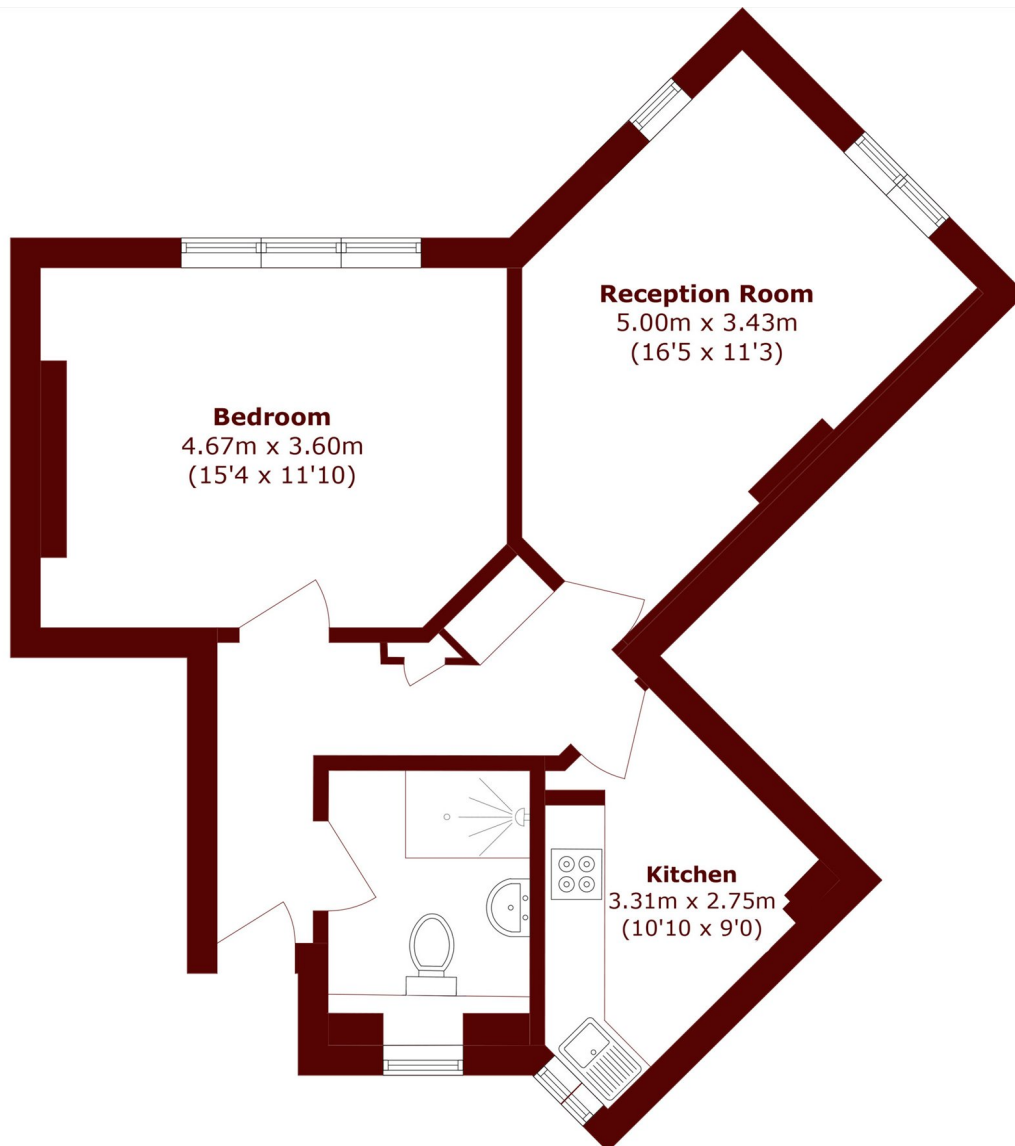
ABOUT THE PROPERTY

A bright and beautifully presented one bedroom apartment, finished and decorated in a contemporary style throughout, offering approximately 579 sq ft of accommodation. The property features a generous reception room filled with natural light, a spacious double bedroom, a modern bathroom and fitted kitchen with breakfast area.

The property is ideally situated with Maida Vale Station and Kilburn Park Station both a short walk away. Paddington Station is also within easy reach, providing access to the Elizabeth Line, Circle & District lines, Hammersmith & City line, as well as the Heathrow Express. The green open spaces of Paddington Recreation



STEP INSIDE MAIDA VALE



Total area (approx.): 53.8 sq. m (579.1 sq. ft)

Little Venice
020 7993 3050

Energy Rating: We aim to make our particulars both accurate and reliable. However, they are not guaranteed; nor do they form part of an offer or contract. If you require clarification on any points then please contact us, especially if you're traveling some distance to view. Please note that appliances and heating systems have not been tested and therefore no warranties can be given as to their good working order

**MARSH &
PARSONS**