



WELLAND STREET, SE10

£420,000

Spacious apartment
Three bedrooms
Chain free
Close to transport
In the heart of Greenwich
Energy rating: c



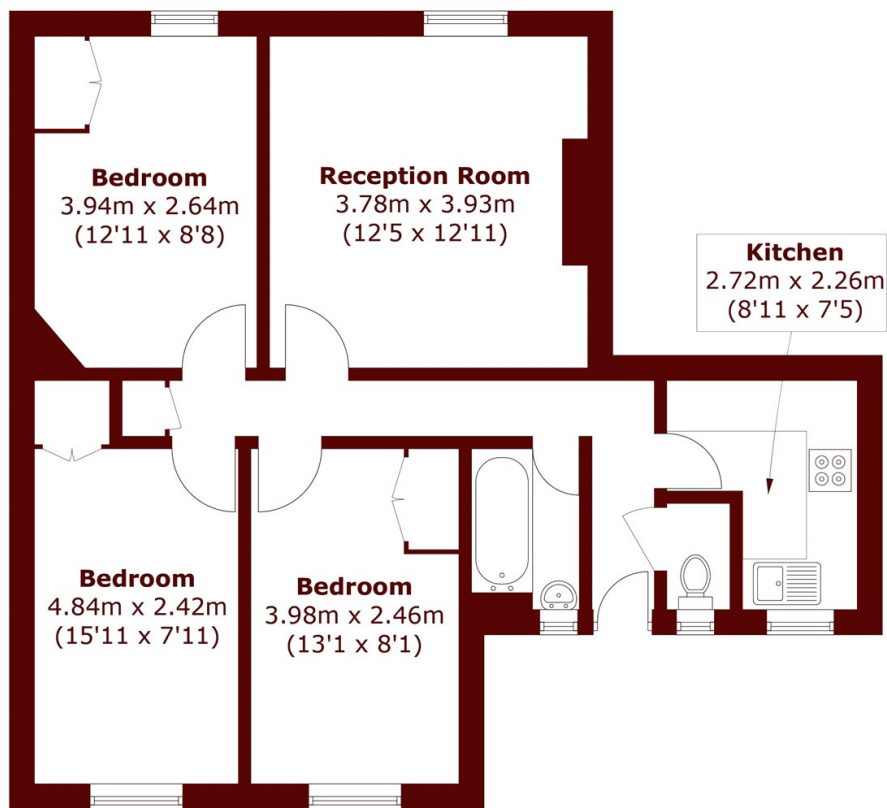
ABOUT THE PROPERTY

A very spacious third floor apartment, located in the heart of Greenwich town centre. Residents parking permits are available to apply for. The property itself offers an abundance of space and accommodation and is located moments away from the river Thames. Inside, you will find three double bedrooms, bathroom with separate W.C, fitted kitchen and a very spacious lounge/diner. The owner is selling chain free.

Greenwich mainline and DLR stations are just a short walking distance away.



STEP INSIDE WELLAND STREET



Total area (approx.): 64.0 sq. m (688.8 sq. ft)

Greenwich
020 8312 8312

Energy Rating: C We aim to make our particulars both accurate and reliable. However, they are not guaranteed; nor do they form part of an offer or contract. If you require clarification on any points then please contact us, especially if you're traveling some distance to view. Please note that appliances and heating systems have not been tested and therefore no warranties can be given as to their good working order

MARSH &
PARSONS