



## LANCASTER ROAD, SW19

£16,500 per month

Gated house  
Seven bedrooms  
Six bathrooms  
Four storeys  
Large garden  
Energy rating: b

@marshandparsons  
marshandparsons.co.uk

MARSH &  
PARSONS

# ABOUT THE PROPERTY

An extensive seven bedroom gated home in the highly sought after Wimbledon Village.

The property comprises a wide entrance hallway, formal reception room, dining room, cloakroom and a kitchen/ breakfast room which leads onto the garden. Downstairs there is a family room, office/gym, cinema room with bar, utility room and a separate guest suite which comprises kitchenette and en-suite shower room. The master suite is on the first floor and has a dressing room, en-suite bathroom and a reading room overlooking the garden.

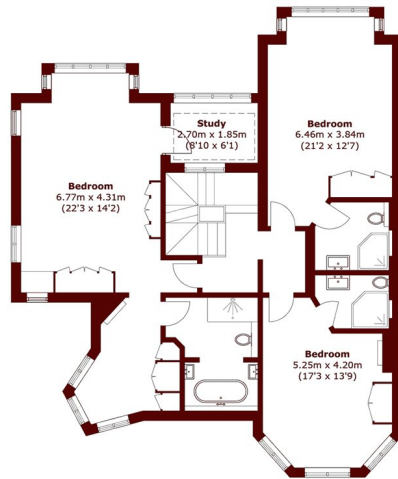




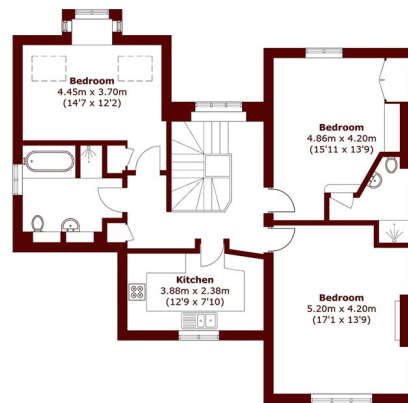




# STEP INSIDE LANCASTER ROAD



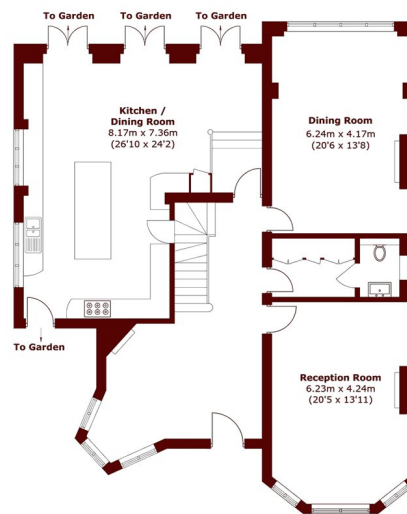
First Floor



Second Floor



Lower Ground Floor



Ground Floor

Total area (approx.): 494.6 sq. m (5,323.8 sq. ft)

Wimbledon  
020 8879 6661

Energy Rating: C We aim to make our particulars both accurate and reliable. However, they are not guaranteed; nor do they form part of an offer or contract. If you require clarification on any points then please contact us, especially if you're traveling some distance to view. Please note that appliances and heating systems have not been tested and therefore no warranties can be given as to their good working order

MARSH &  
PARSONS