



GLOUCESTER SQUARE, W2

£10,000,000

Air conditioning throughout
Underfloor heating
Passenger lift
Parquet flooring
Gaggenau appliances
Alexa-controlled technology

@marshandparsons
marshandparsons.co.uk

MARSH &
PARSONS

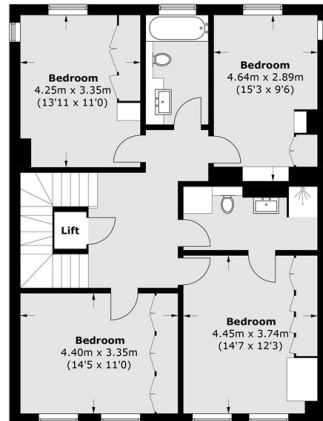


ABOUT THE PROPERTY

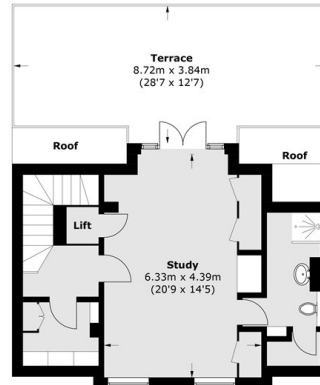
Presented in a contemporary style, this exquisite, newly redeveloped freehold house has six bedrooms, five bathrooms, two additional guest WC's and a self-contained nanny/guest apartment. The ground floor boasts an open plan kitchen with bespoke marble finishes, top-of-the-line Gaggenau appliances and a wine fridge. There is a separate formal dining room and a chef's kitchen, perfect for hosting dinner parties. The main reception room on the first floor has access to a balcony, alongside the principal bedroom complete with a walk-in dressing room and en suite bathroom.



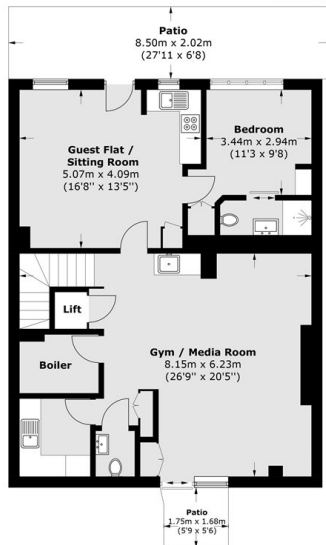
STEP INSIDE GLOUCESTER SQUARE



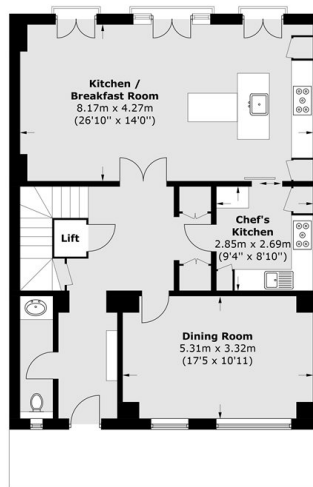
Second Floor



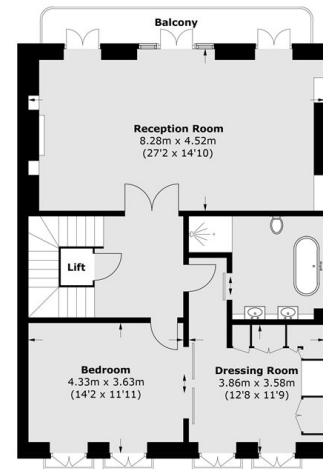
Third Floor



Lower Ground Floor



Ground Floor



First Floor

Total area (approx.): 402.5 sq. m (4,332.5 sq. ft)
(Including Third Floor Lift & Excluding Other Lifts)
Terrace / Balcony: 38.3 sq. m (412.3 sq. ft)

Marylebone & Mayfair
020 7935 1775

Energy Rating: C We aim to make our particulars both accurate and reliable. However, they are not guaranteed; nor do they form part of an offer or contract. If you require clarification on any points then please contact us, especially if you're traveling some distance to view. Please note that appliances and heating systems have not been tested and therefore no warranties can be given as to their good working order

**MARSH &
PARSONS**