



## CAMPBELL GORDON WAY, NW2

£275,000

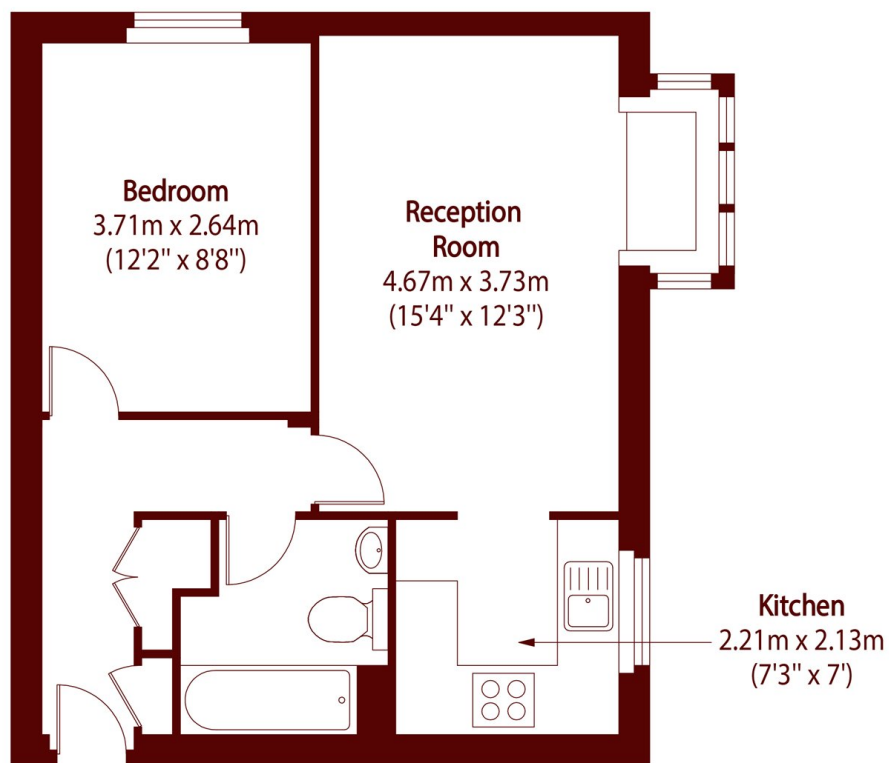
Lovely one bed flat in a well maintained purpose built development on the edge of Gladstone Park. The property benefits from a large reception room with a semi open kitchen a spacious bedroom and family bathroom.

One bedroom  
One bathroom  
Residents parking

Long let  
Furnished / unfurnished  
Modern

# STEP INSIDE

## CAMPBELL GORDON WAY



Total area (approx): 41.62 sq m (448 sq. ft)

**Willesden Green**  
020 8451 0420

Energy Rating: We aim to make our particulars both accurate and reliable. However, they are not guaranteed; nor do they form part of an offer or contract. If you require clarification on any points then please contact us, especially if you're traveling some distance to view. Please note that appliances and heating systems have not been tested and therefore no warranties can be given as to their good working order

**MARSH &  
PARSONS**