



## FULHAM PALACE ROAD, SW6

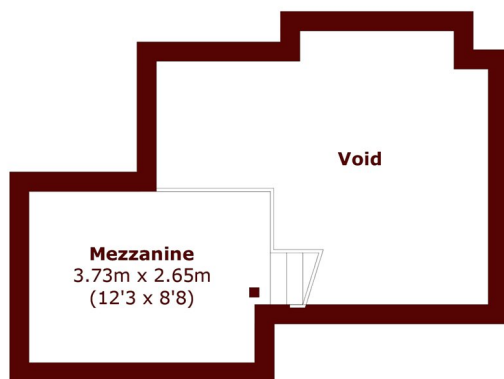
£525,000

A stunning and contemporary top floor two bedroom apartment overlooking Bishops Park. The property offers incredibly high ceilings with bright a separate mezzanine that is a versatile space for either additional

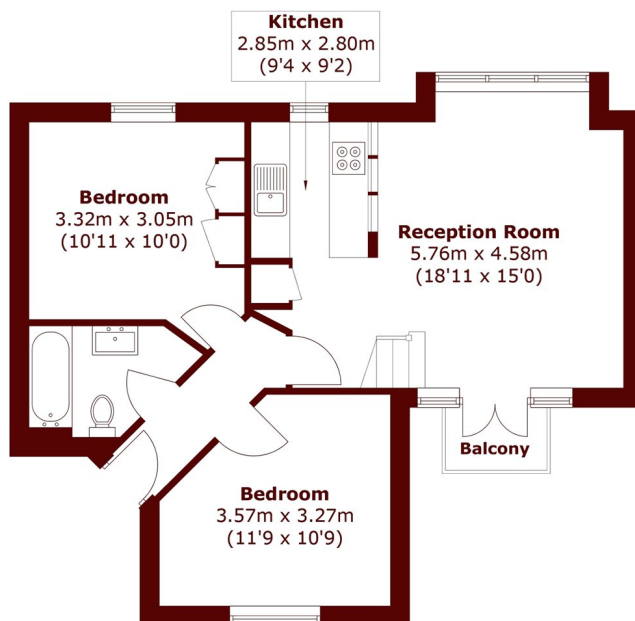
Two bedrooms  
Modern bathroom  
Fantastic views

Balcony  
Long lease  
Excellent transport links

# STEP INSIDE FULHAM PALACE ROAD



**Mezzanine**



**Third Floor**



**Ground Floor**

Total area (approx.): 63.3 sq. m (681.4 sq. ft)  
(Excluding Void)  
External Storage : 7.0 sq. m (75.3 sq. ft)  
Balcony: 1.5 sq. m (16.1 sq. ft)

**Bishops Park**  
020 7993 9888

Energy Rating: E We aim to make our particulars both accurate and reliable. However, they are not guaranteed; nor do they form part of an offer or contract. If you require clarification on any points then please contact us, especially if you're traveling some distance to view. Please note that appliances and heating systems have not been tested and therefore no warranties can be given as to their good working order

**MARSH &  
PARSONS**