



KHAMA ROAD, SW17

£900,000

Four Bedrooms
Three Bathrooms
In excess of 1600 SQFT
Four Stories
Well Presented Throughout
Chain Free

@marshandparsons
marshandparsons.co.uk

MARSH &
PARSONS

ABOUT THE PROPERTY

A well-presented, four-story family home situated a short walk from Tooting Broadway Tube station. extending to over 1,600 sq ft with four bedrooms, a large kitchen/diner, a spacious reception room, three bathrooms and a landscaped private garden.

Khama Road is a quiet residential street well located for the amenities of Tooting, well regarded local schools and excellent transport links.

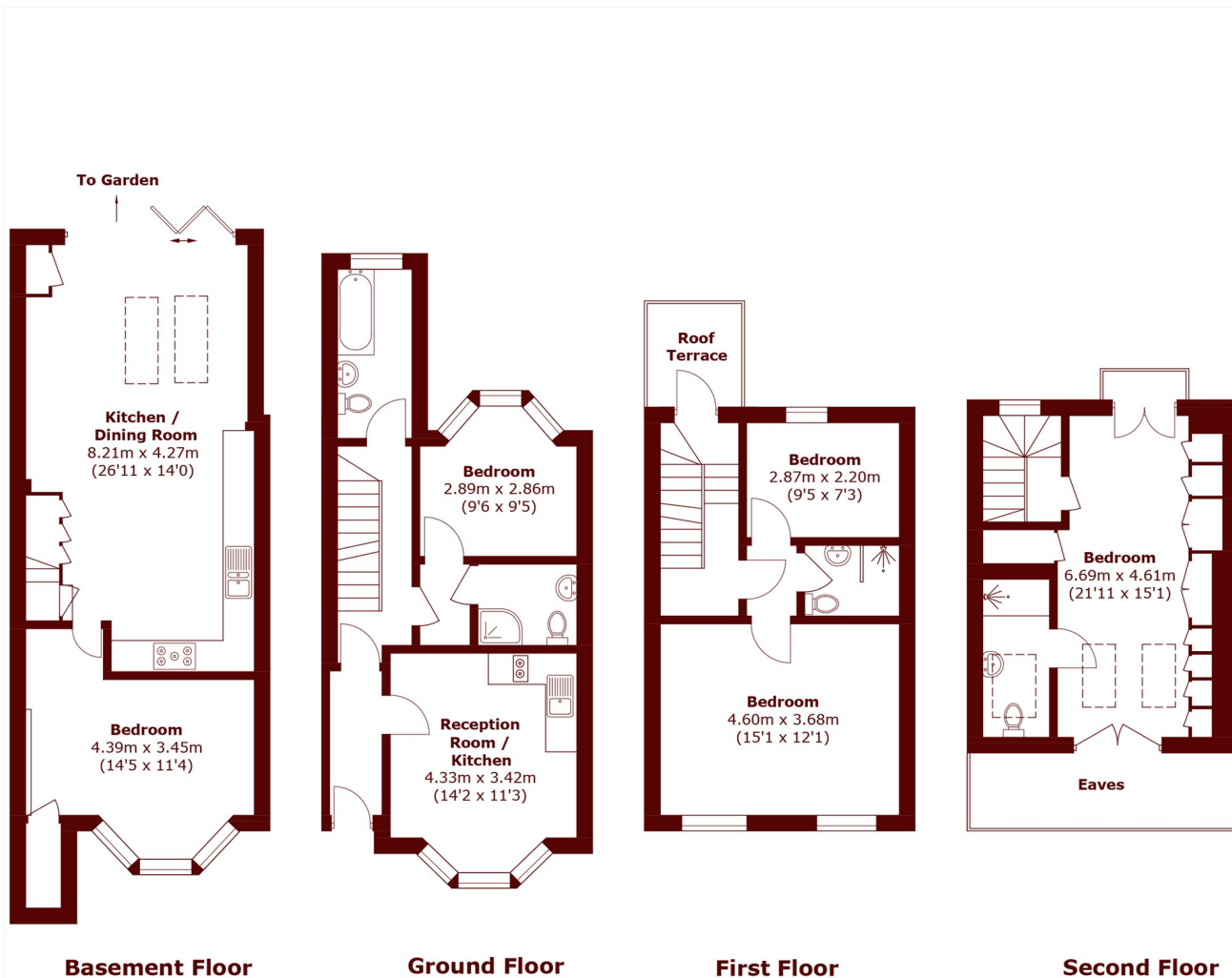








STEP INSIDE KHAMA ROAD



Total area (approx.): 156.6 sq. m (1,685.4 sq. ft)
(Including Basement / Excluding Eaves)

Tooting
020 8767 3655

Energy Rating: We aim to make our particulars both accurate and reliable. However, they are not guaranteed; nor do they form part of an offer or contract. If you require clarification on any points then please contact us, especially if you're traveling some distance to view. Please note that appliances and heating systems have not been tested and therefore no warranties can be given as to their good working order

MARSH &
PARSONS