



CRABTREE LANE, SW6

£6,200 per week (per month)

Four bedroom
Family home
Landscaped garden
Close to transport links
Newly Renovated
Modern finish

@marshandparsons
marshandparsons.co.uk

MARSH &
PARSONS

ABOUT THE PROPERTY

This newly and stylishly refurbished family home has been finished to the most unique and highest of standards. This beautiful family home offers fantastic contemporary family living while keeping true to its period heritage.

Upon entrance you are greeted by a large double reception room with stunning wood flooring and high ceilings, this then flows through to an elegant extended eat-in kitchen with the newest of appliances and mod cons. Patio doors then open out onto the immaculate landscaped garden which really giving a feeling of bringing the garden into the house. The ground floor is then completed with a separate WC. The first floor comprises three double bedroom of which one is en suite

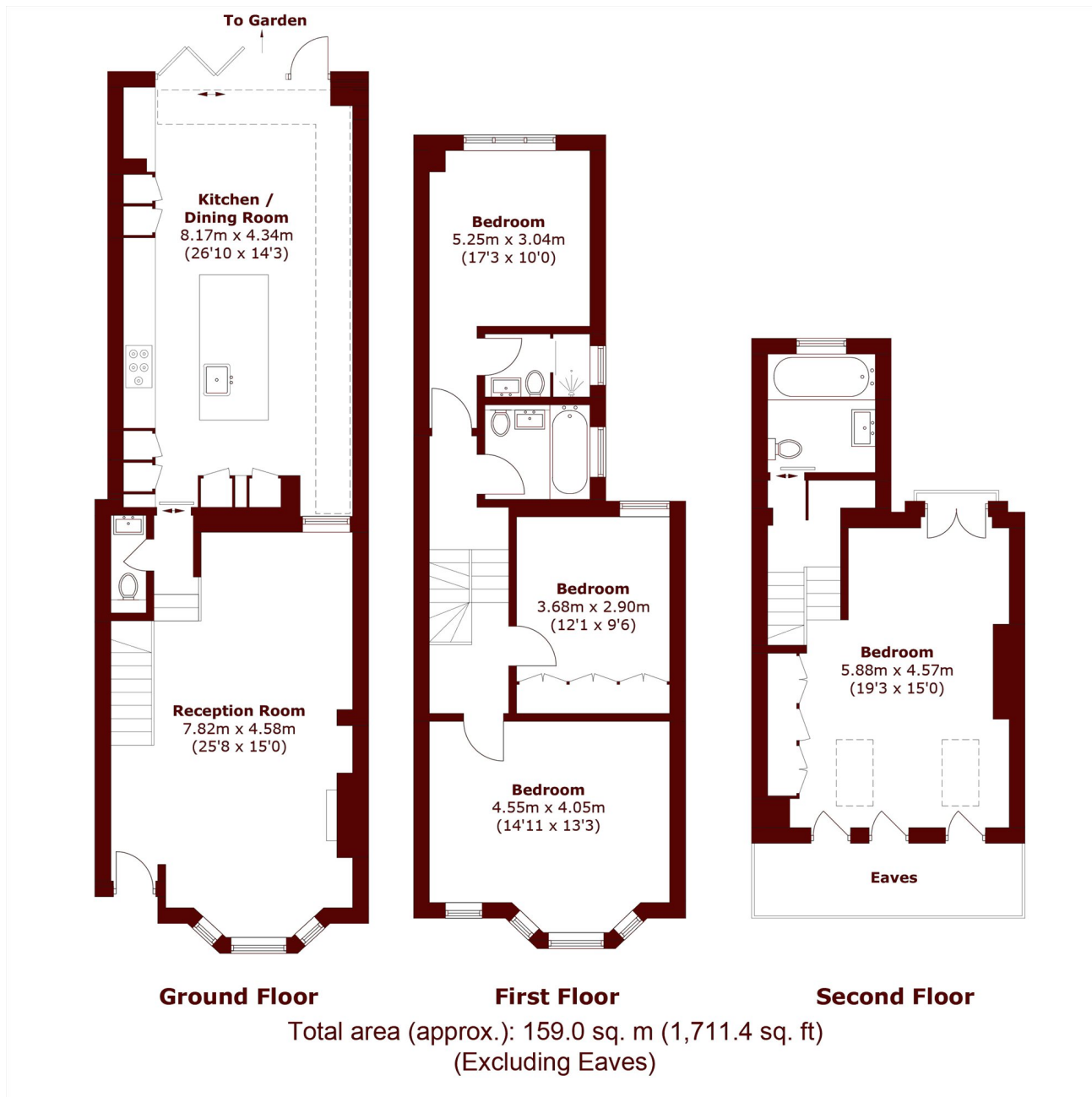








STEP INSIDE CRABTREE LANE



Bishops Park
020 7368 2480

Energy Rating: We aim to make our particulars both accurate and reliable. However, they are not guaranteed; nor do they form part of an offer or contract. If you require clarification on any points then please contact us, especially if you're traveling some distance to view. Please note that appliances and heating systems have not been tested and therefore no warranties can be given as to their good working order

MARSH &
PARSONS